



10 cm scale ruler

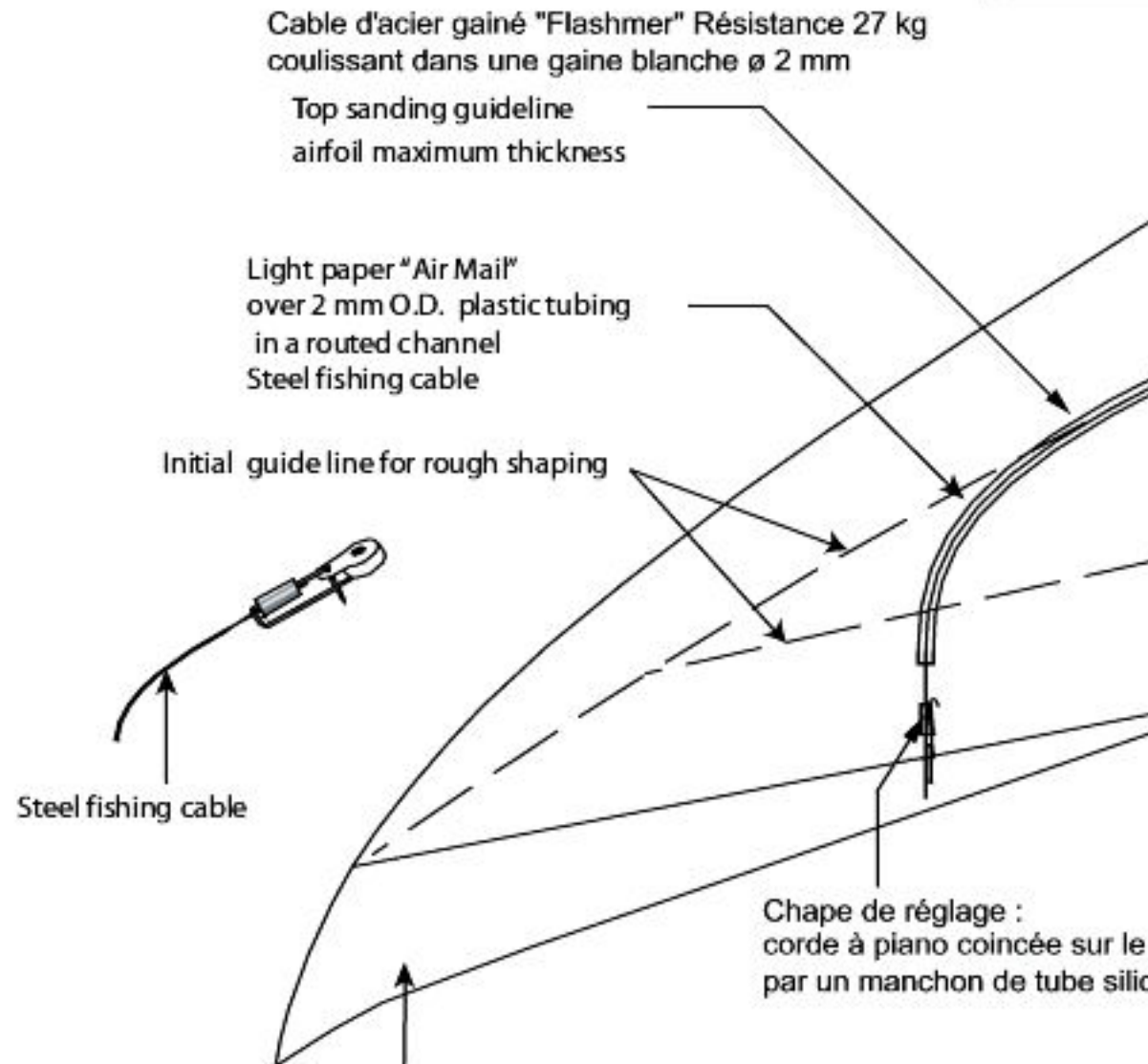
6 mm Depron foam board construction

Toute la construction : Dépron 6 mm

Colle cyano spéciale polystyrène et colle blanche vinylique



jivaro-mo





radio-models.org

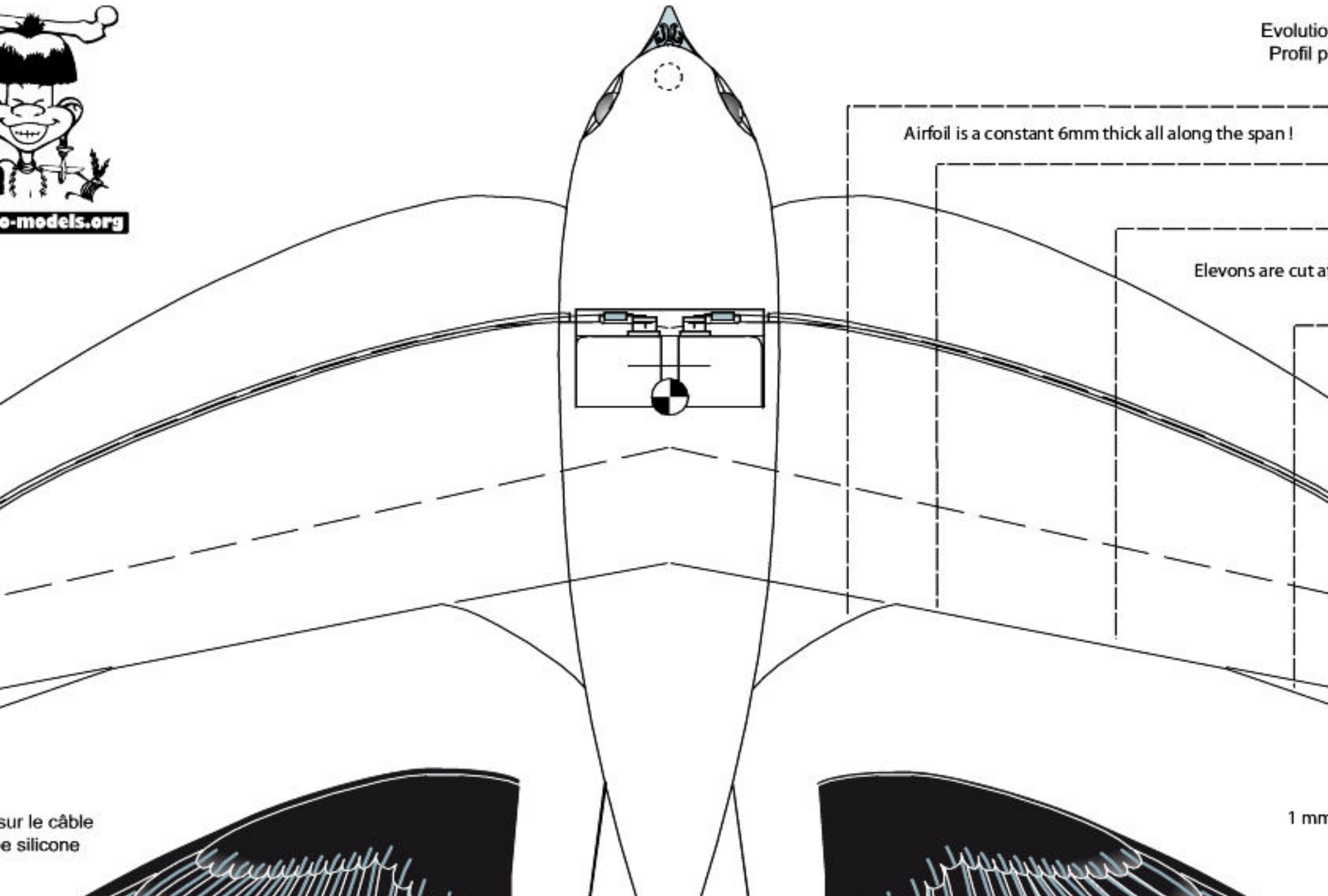
Evolution
Profil p

Airfoil is a constant 6mm thick all along the span!

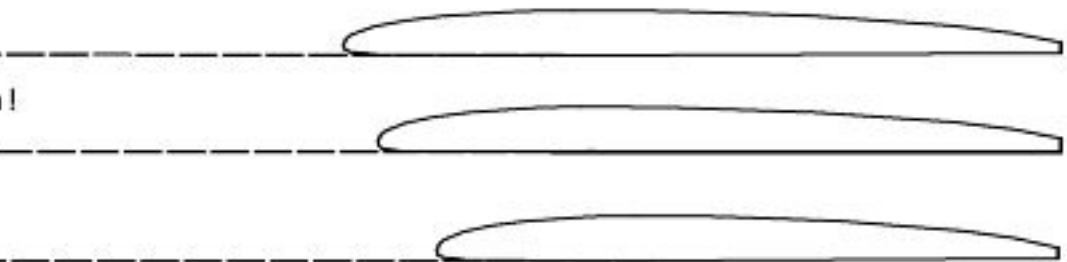
Elevons are cut a

sur le câble
de silicone

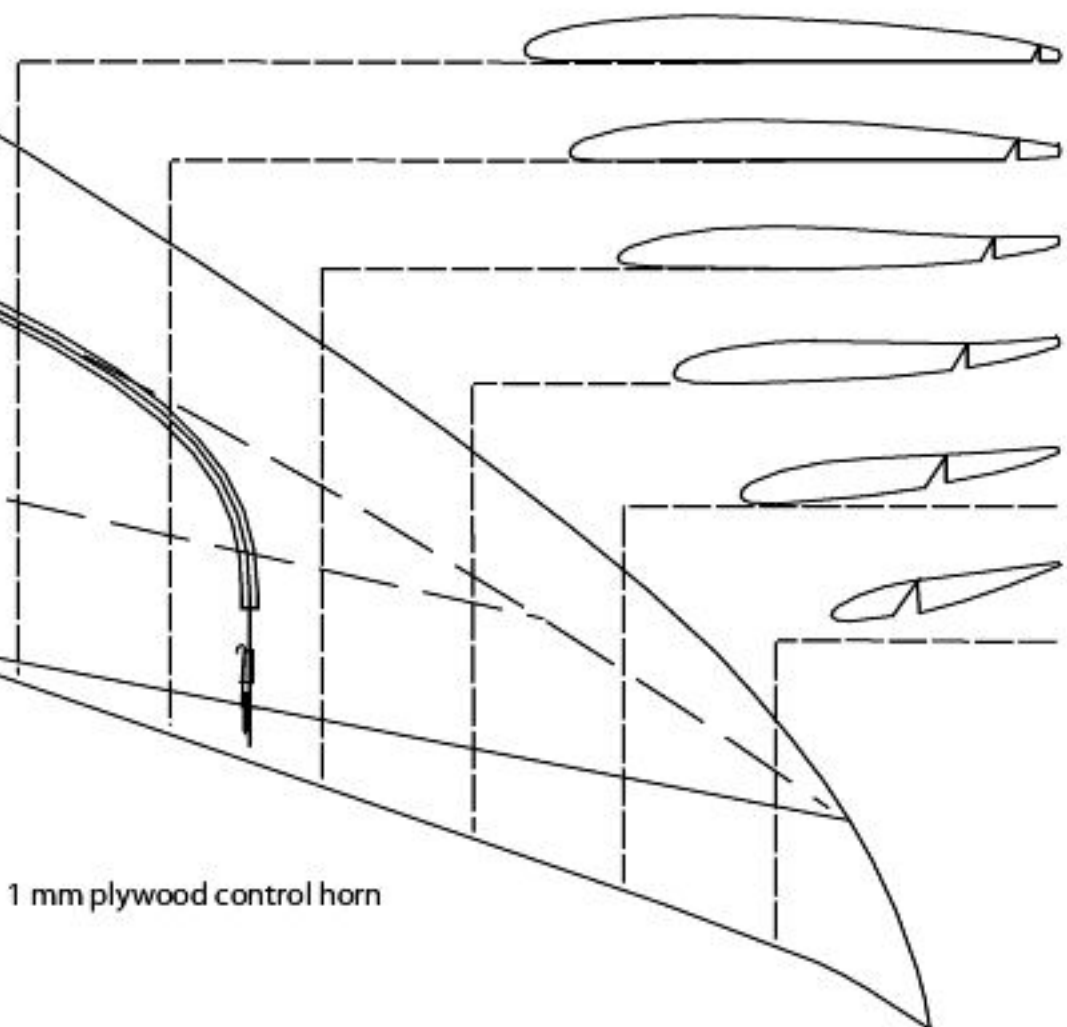
1 mm



olution du profil I.M.P.E.C. : Inframince Modifié Poncette à Epaisseur Constante
profil plan-convexe évoluant en dissymétrie, le vrillage commence à l'élevon



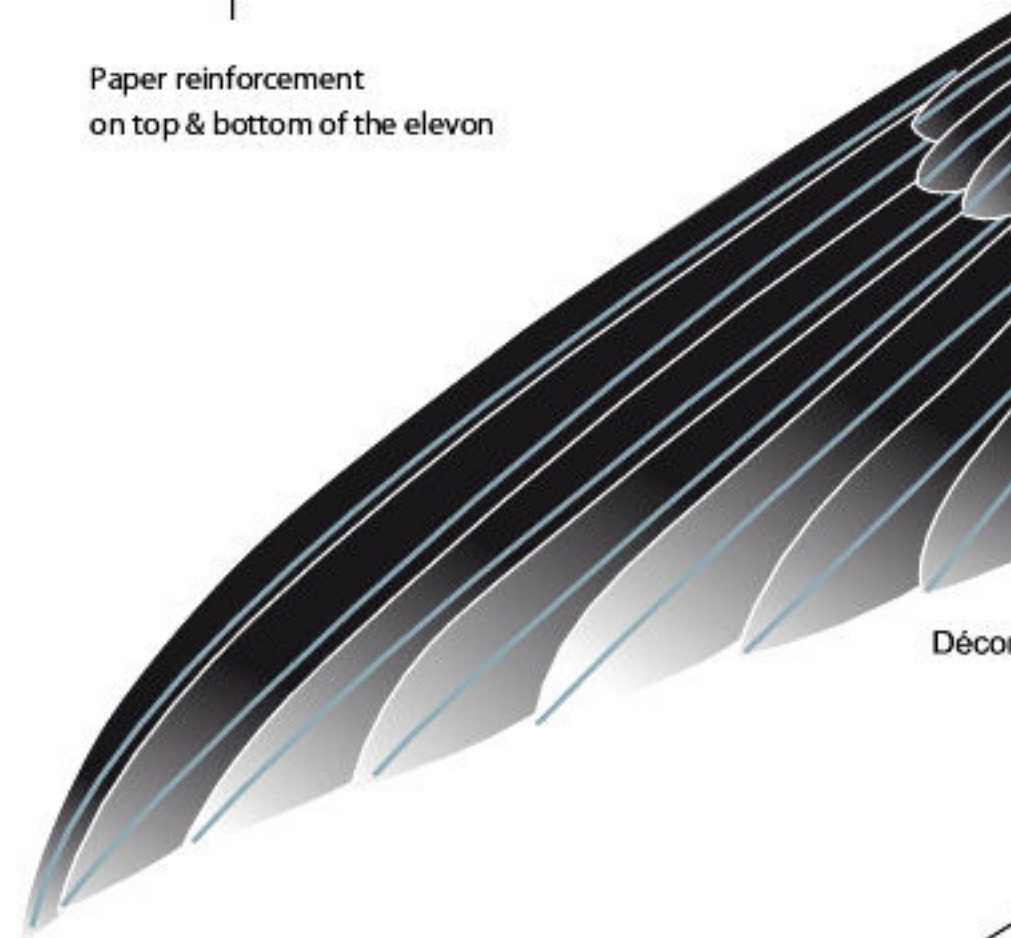
cut after shaping sanding and twisting



1 mm plywood control horn



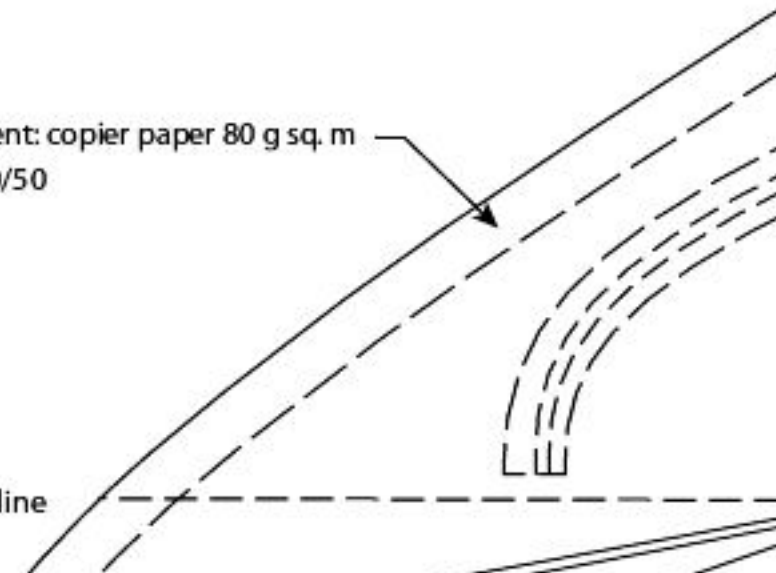
Paper reinforcement
on top & bottom of the elevon

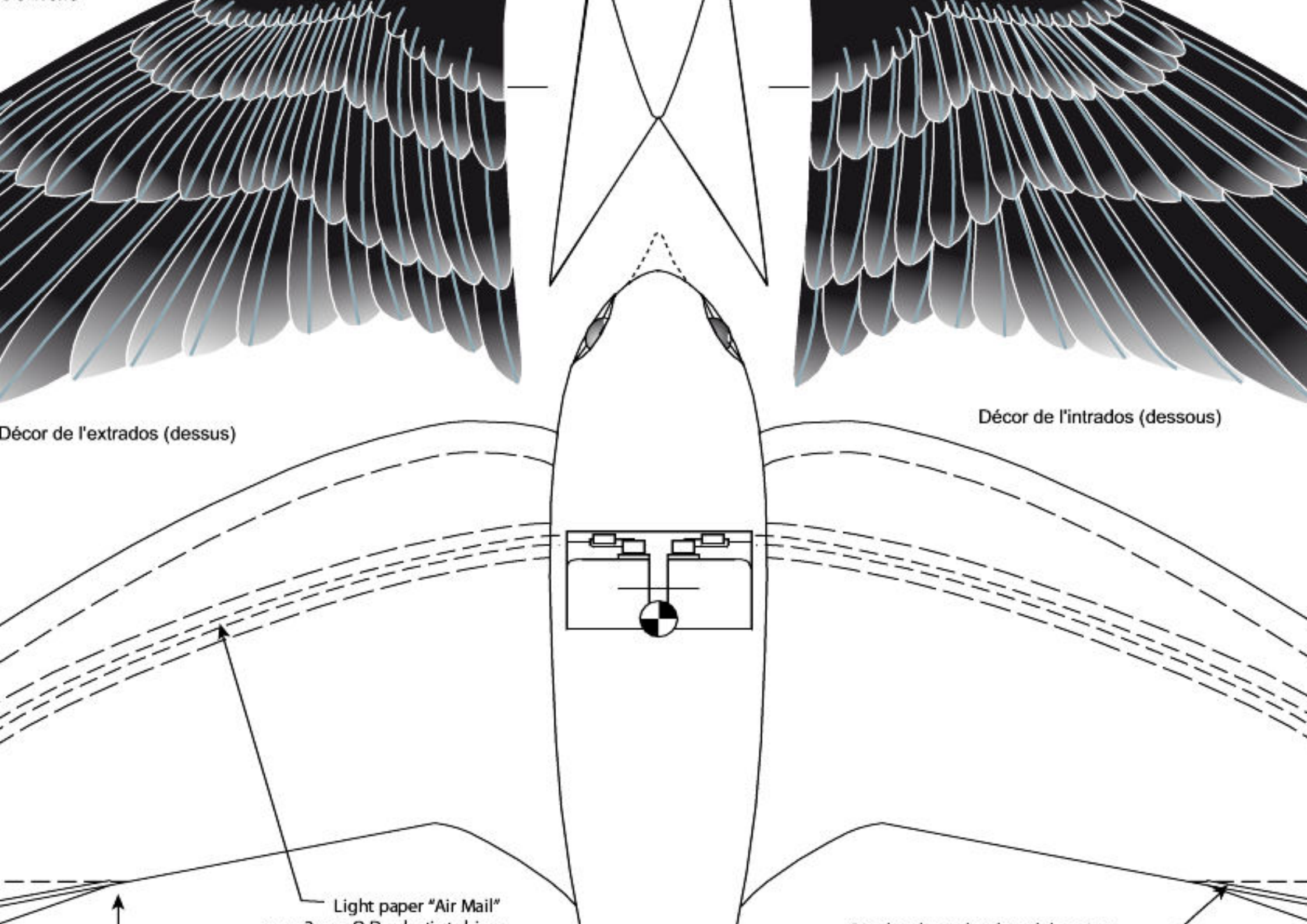


Décor

Leading edge reinforcement: copier paper 80 g sq. m
with white glue diluted 50/50

Bottom sanding line





Décor de l'extrados (dessus)

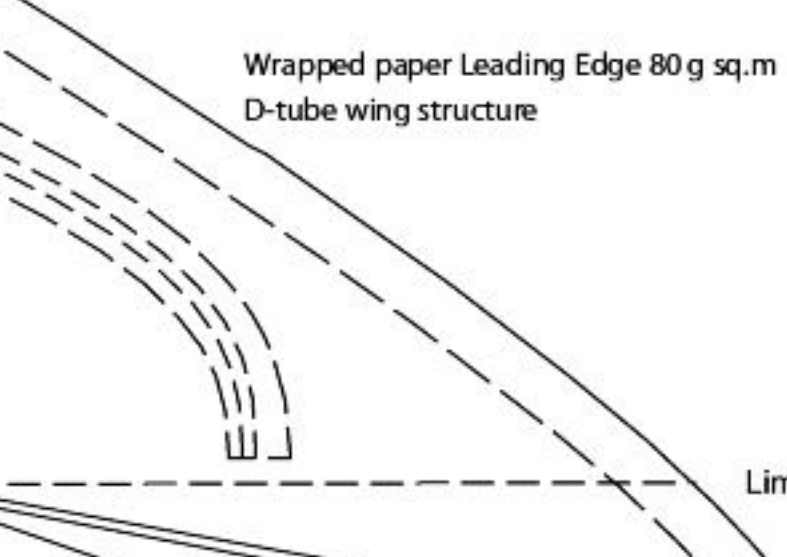
Décor de l'intrados (dessous)

Light paper "Air Mail"



Vrillage négatif : 15 mm à la pointe

Washout 15 mm

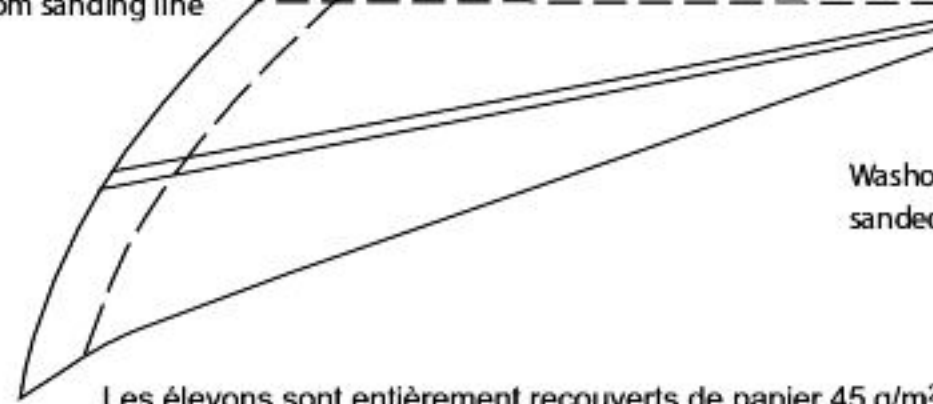


Wrapped paper Leading Edge 80 g sq.m
D-tube wing structure

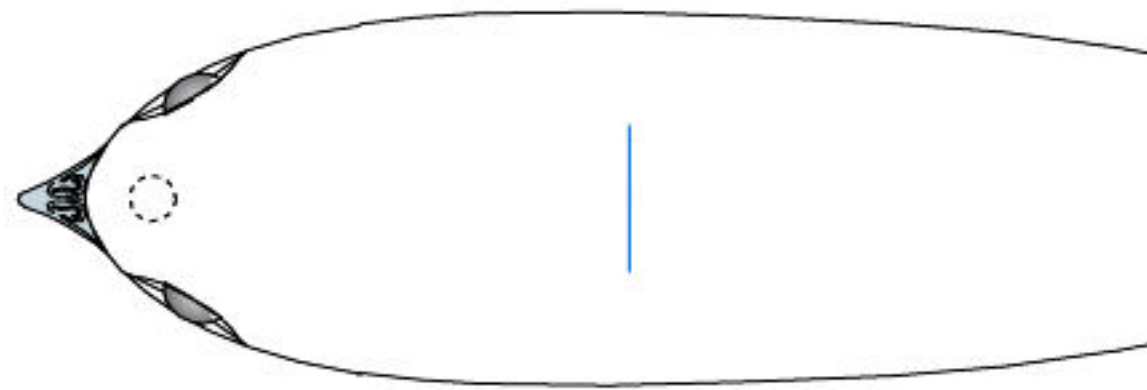
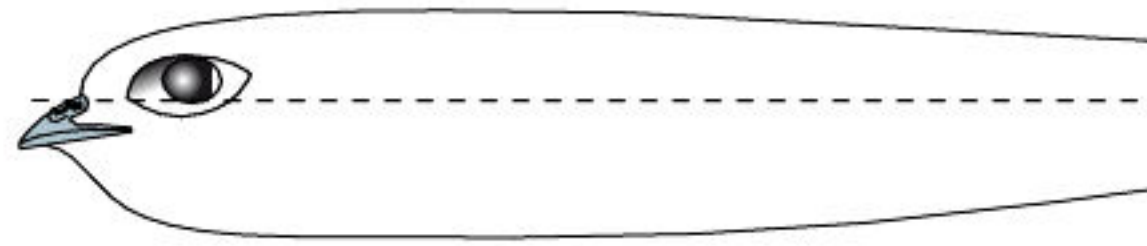
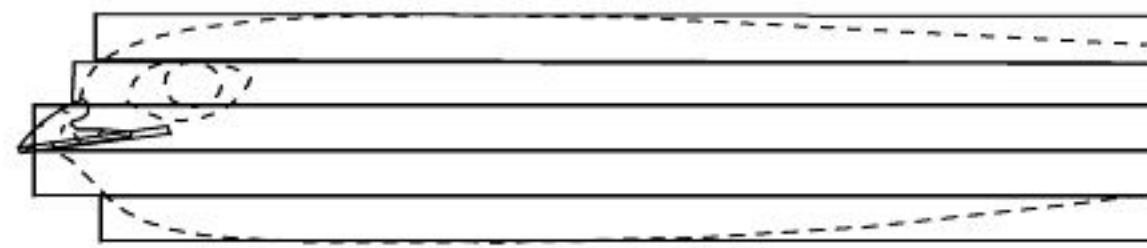
Limite de ponçage à l'intrados

Bottom sanding line

Washo
sanded



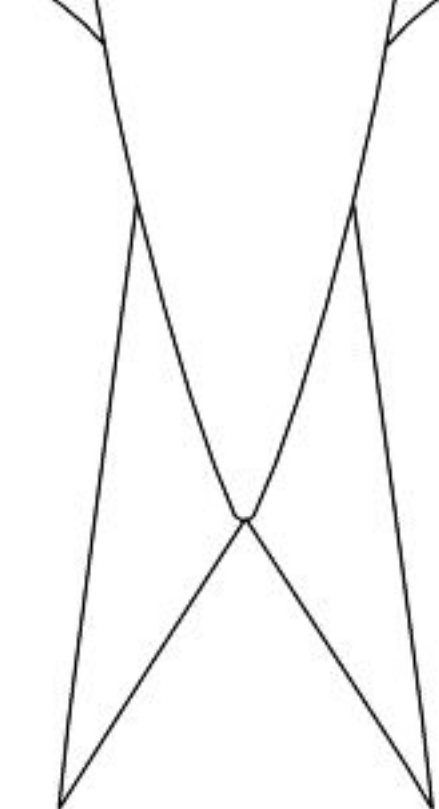
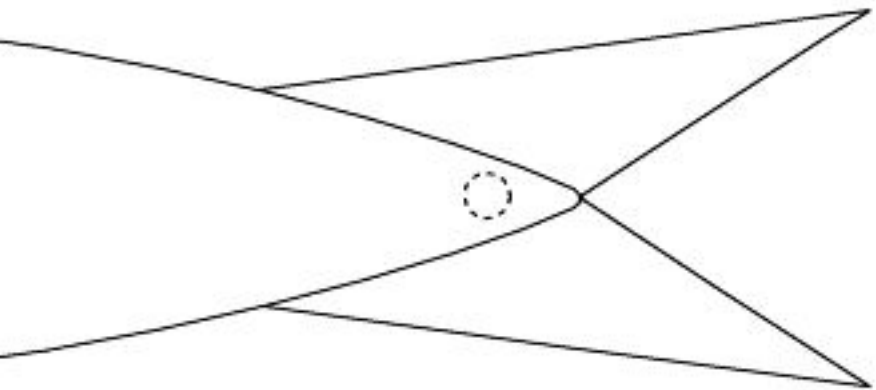
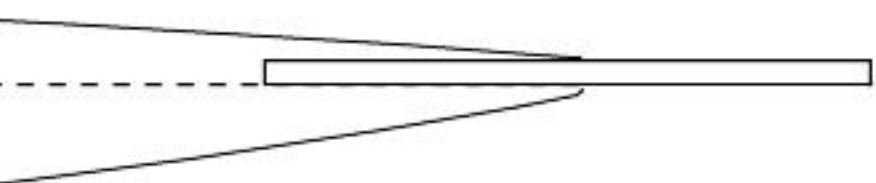
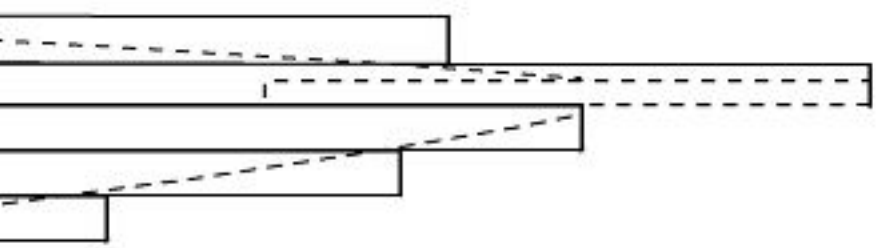
Les élevons sont entièrement recouverts de papier 45 g/m²



Light paper "Air Mail"
over 2 mm O.D. plastic tubing

Washout starts here
sanded linear, then heat twisted to final washout

5 g/m²



Queue : plaque de l'aile amincie
le "V" n' est découpé qu' à la fin

Cut the elevon but bevel the wing

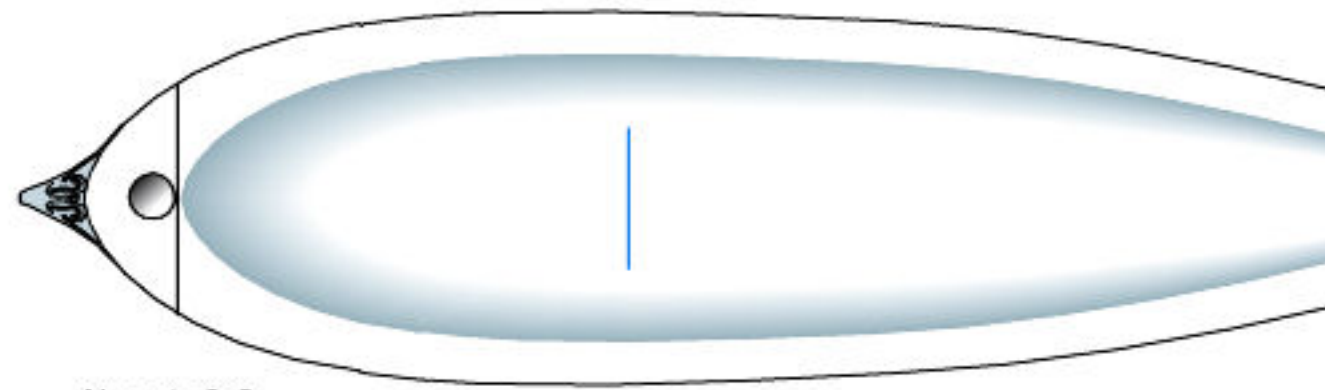
Pour permettre le débattement des gouvernes :
chanfreiner l'aile plutôt que l'élevon afin de ne pas fragiliser

Hinge: Blenderm strips : 3 mm

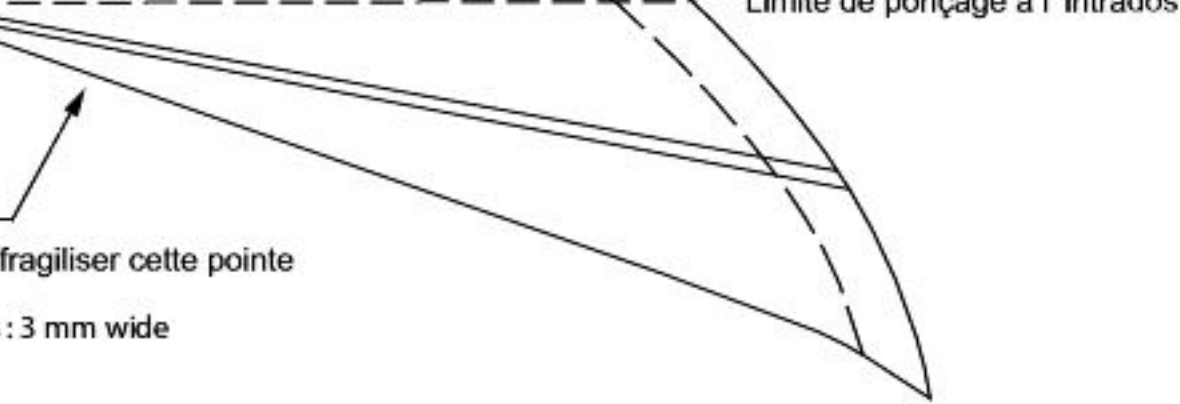
le vrillage commence à l'élevon

Envergure : 52 cm
Longueur : 25,5 cm
Masse : 33 g
Surface : 4 dm²
Charge alaire : 8,25 g/dm²
Martinet cellule seule : 17 g

Equipements :
Accu : 1 x Li-Po Kokam 145 3
Servos : 2 x 4 g
Récepteur JMP Solutions pri
Cordon alimentation = 1 g
total réception = 16 g



Aimants 6x2
Magnet 6x2



fragiliser cette pointe

: 3 mm wide



on

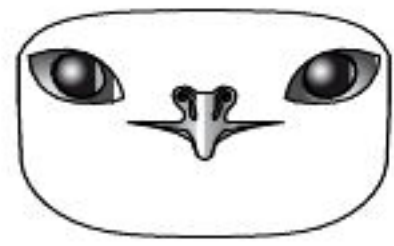
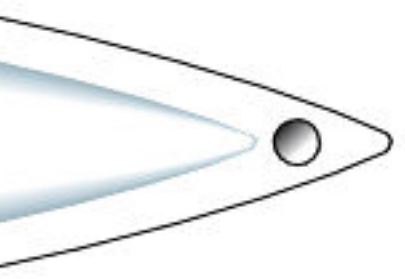
145 3,7 V = 4 g

ns prises uni = 3 g

g

Martinet

*“Volupture”
de Gérard Jumelin*



PLANEUR VOL DE PENTE