

Bord d'attaque : balsa 3x8

Faux bord d'attaque : balsa 3x8

Saumon : balsa 6 mm

Saumon : balsa 6 mm

N14

N13

N12

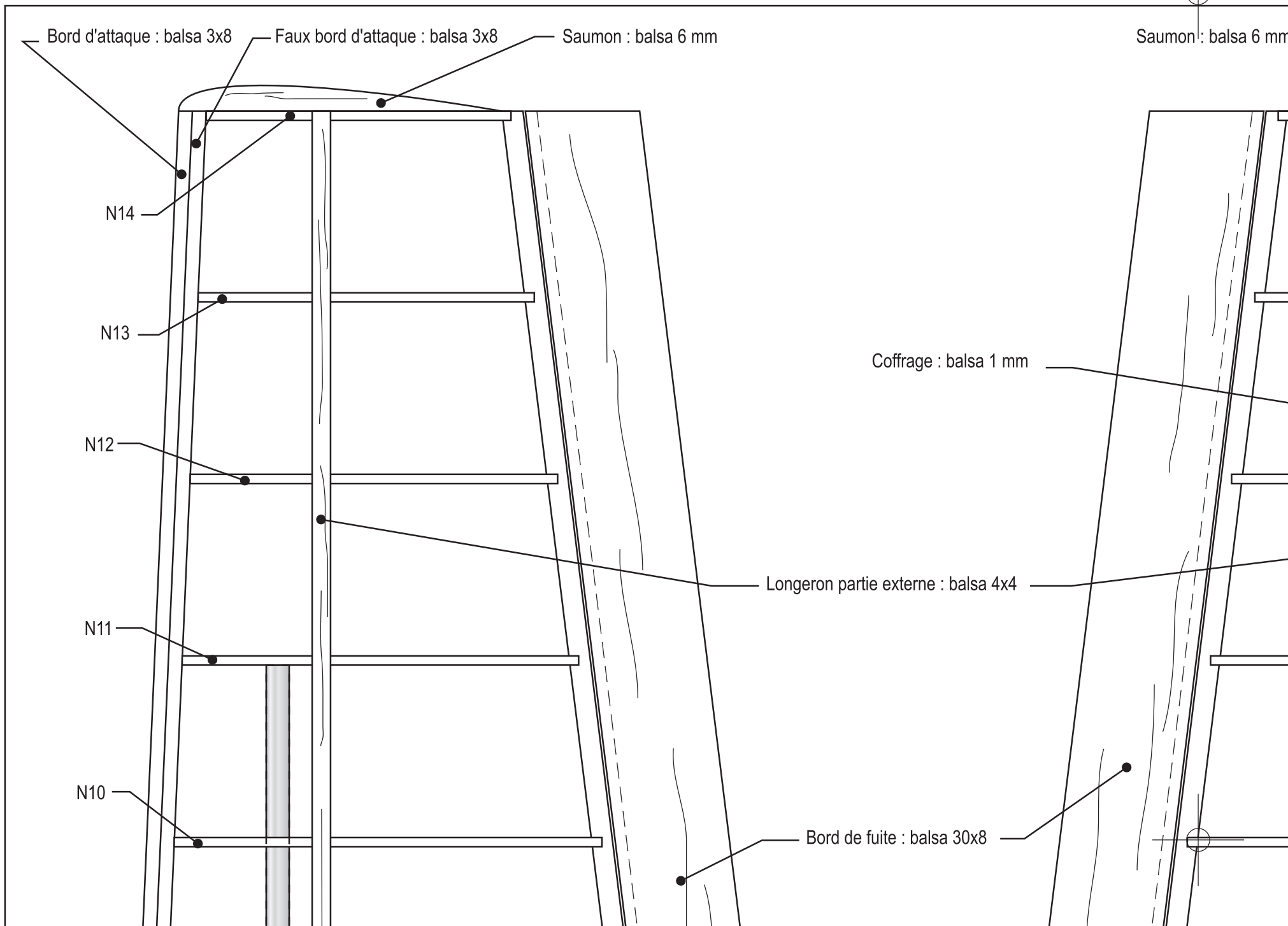
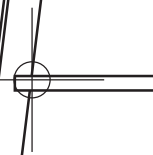
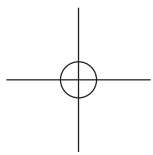
N11

N10

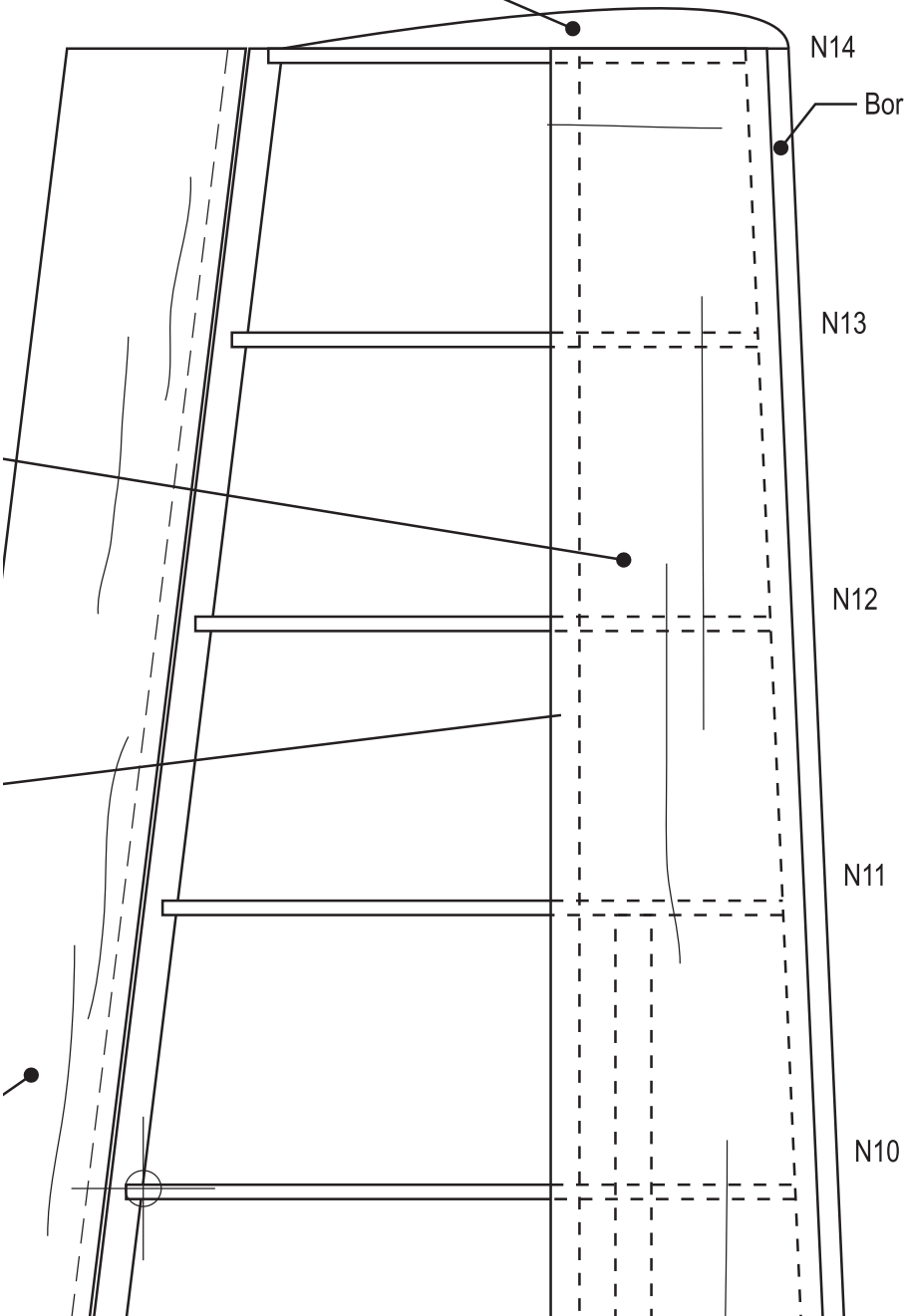
Coffrage : balsa 1 mm

Longeron partie externe : balsa 4x4

Bord de fuite : balsa 30x8



Saumon: balsa 6 mm



N14

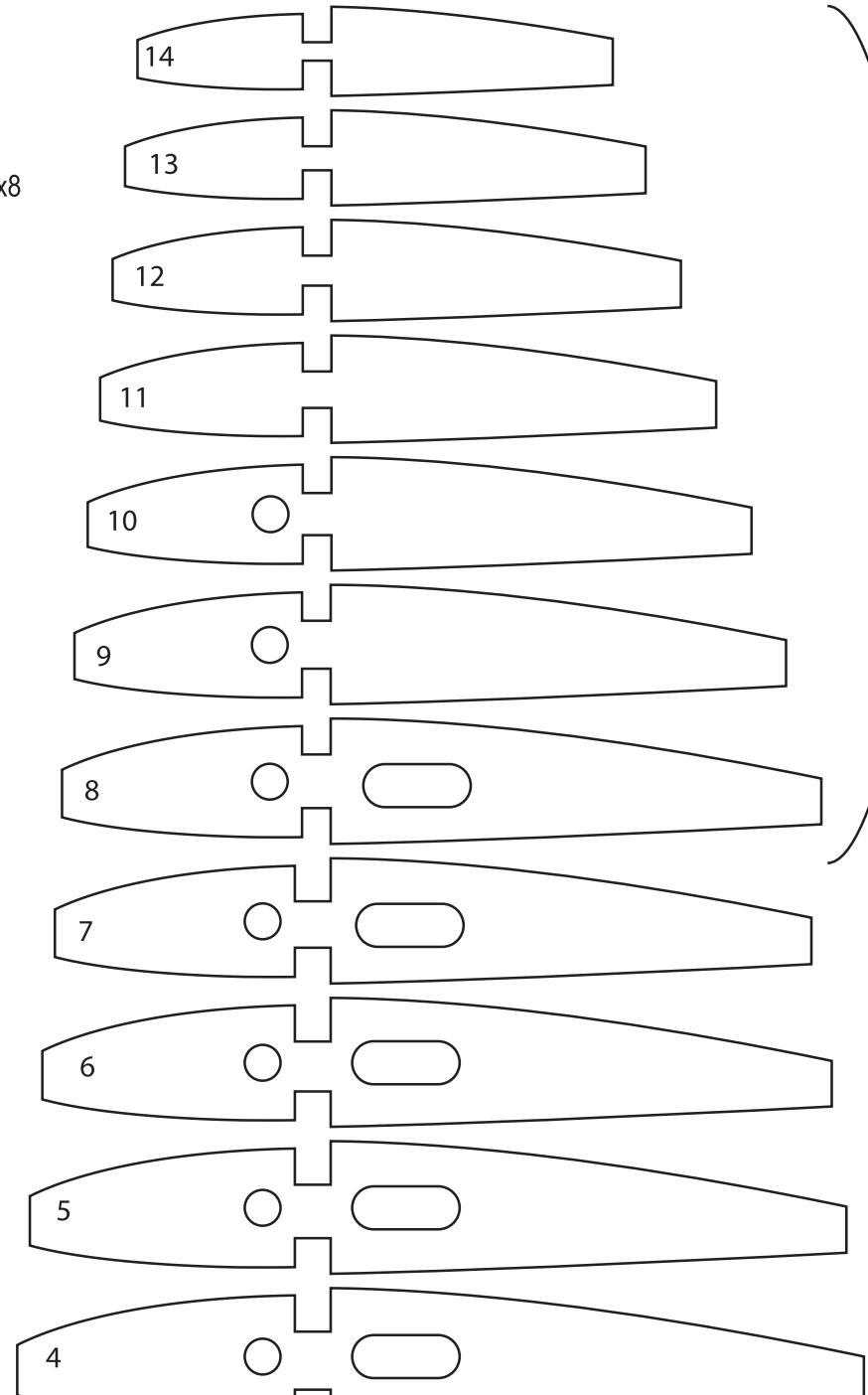
Bord d'attaque : balsa 3x8

N13

N12

N11

N10



Nervures pa  
N8 : balsa 4  
N9 à N14 : l



Nervures panneaux externes  
N8 : balsa 4 mm  
N9 à N14 : balsa 2 mm

# TERRAFUGIA

## *Transition*

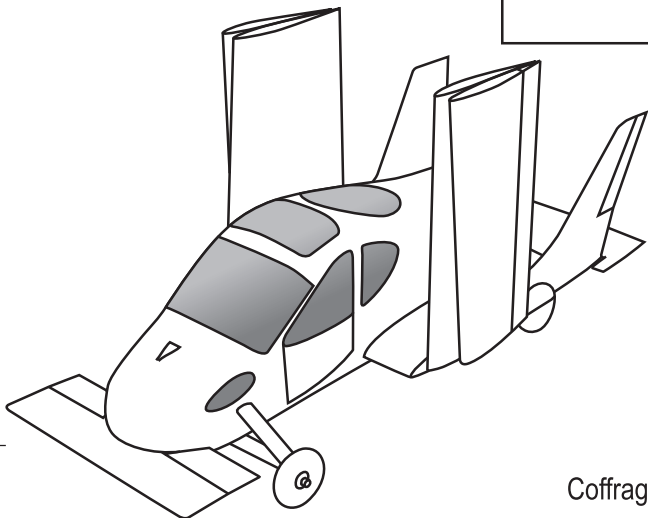
Conception : Romain Berlivet (07-2009)

Dessin du plan : Laurent Berlivet (12-2009)

Planche 2/2

Présentation complète : [http://www.jivaro-models.org/terrafugia\\_transition/page\\_terrafugia.html](http://www.jivaro-models.org/terrafugia_transition/page_terrafugia.html)

Contact : [romain@jivaro-models.org](mailto:romain@jivaro-models.org) or [laurent@jivaro-models.org](mailto:laurent@jivaro-models.org)



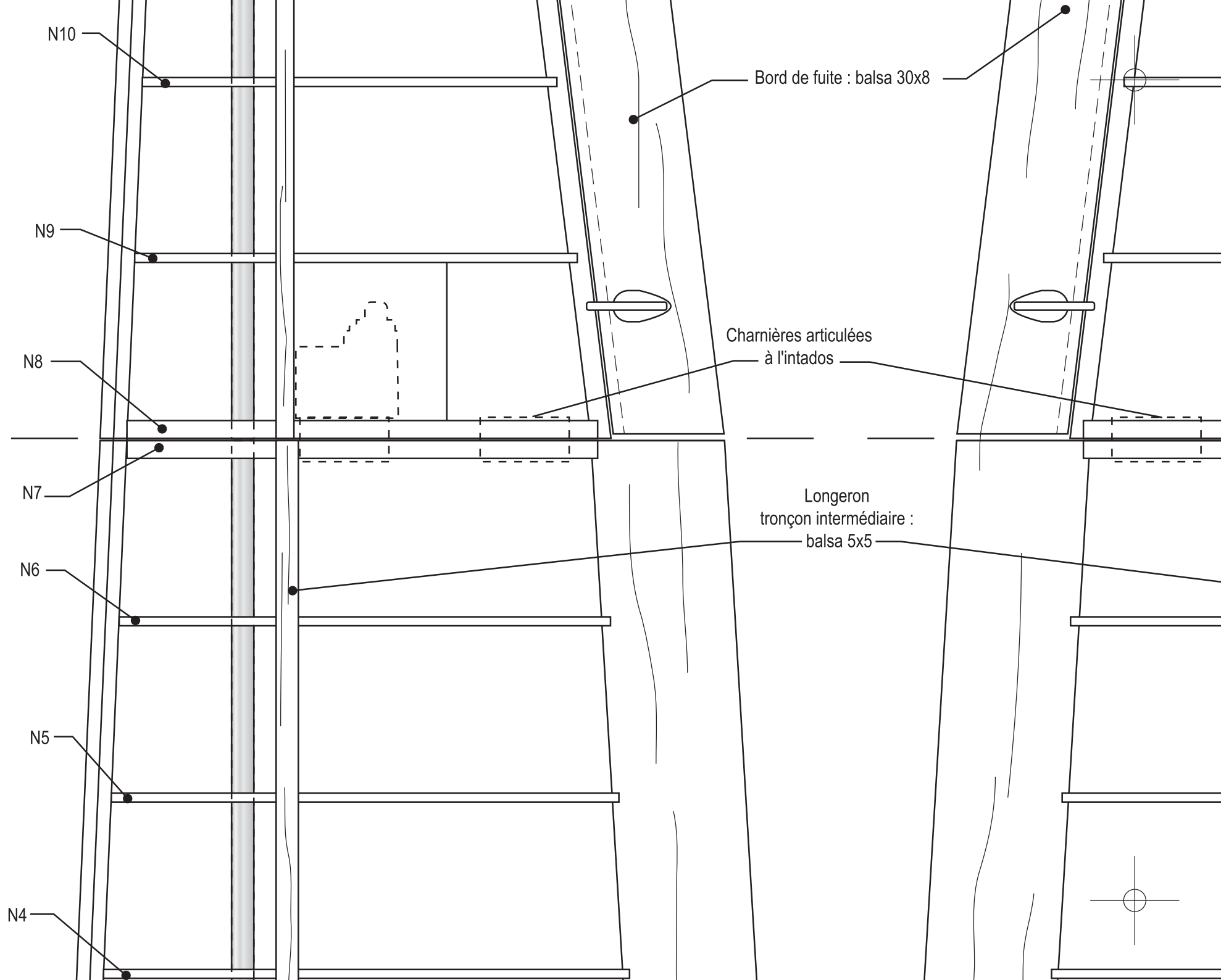
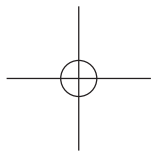
Nervures panneaux intermédiaires

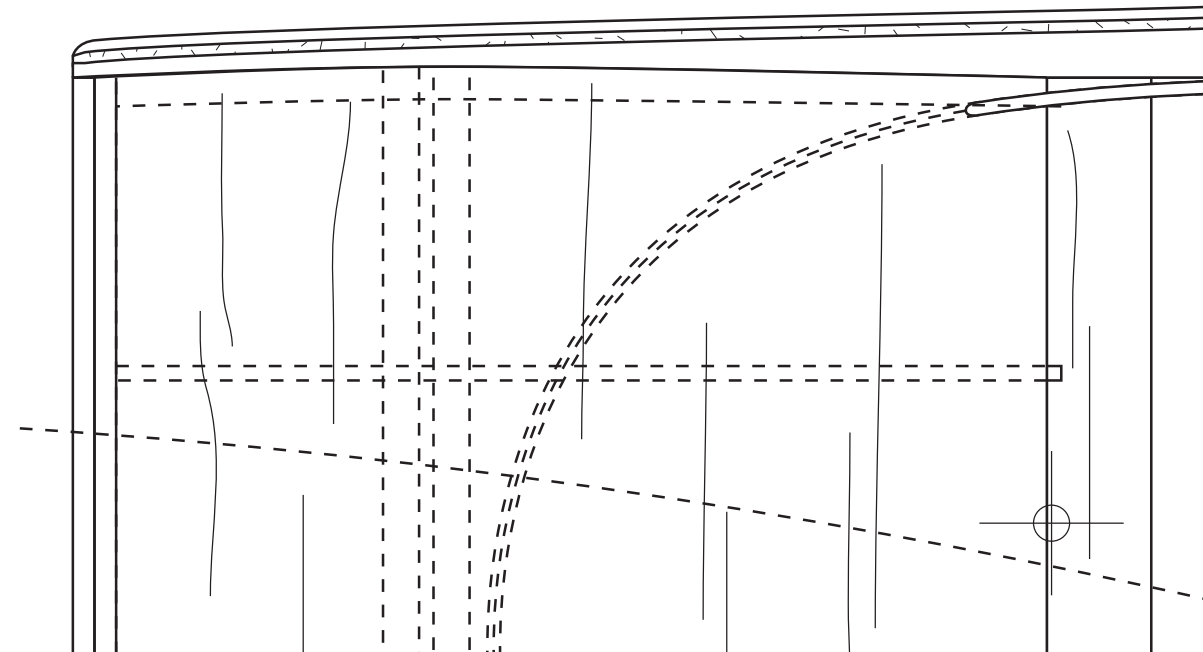
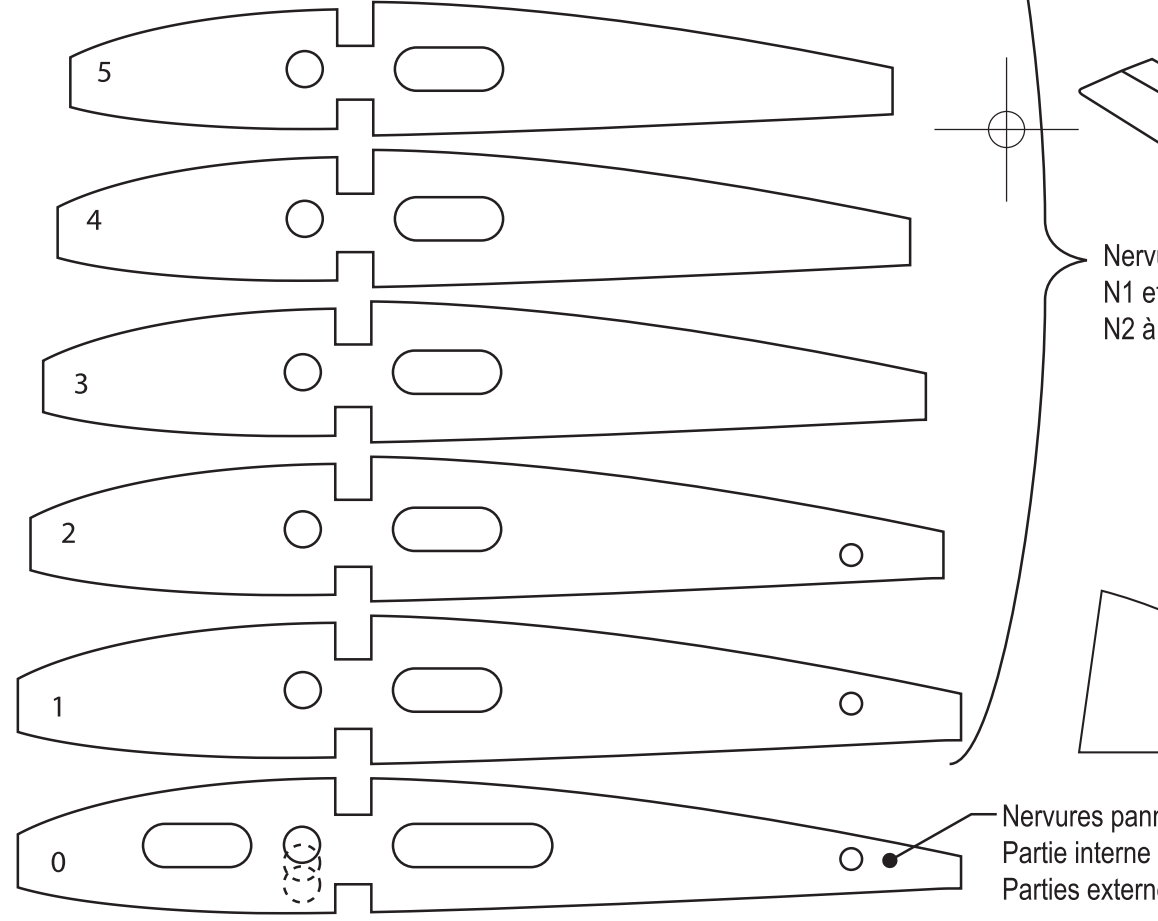
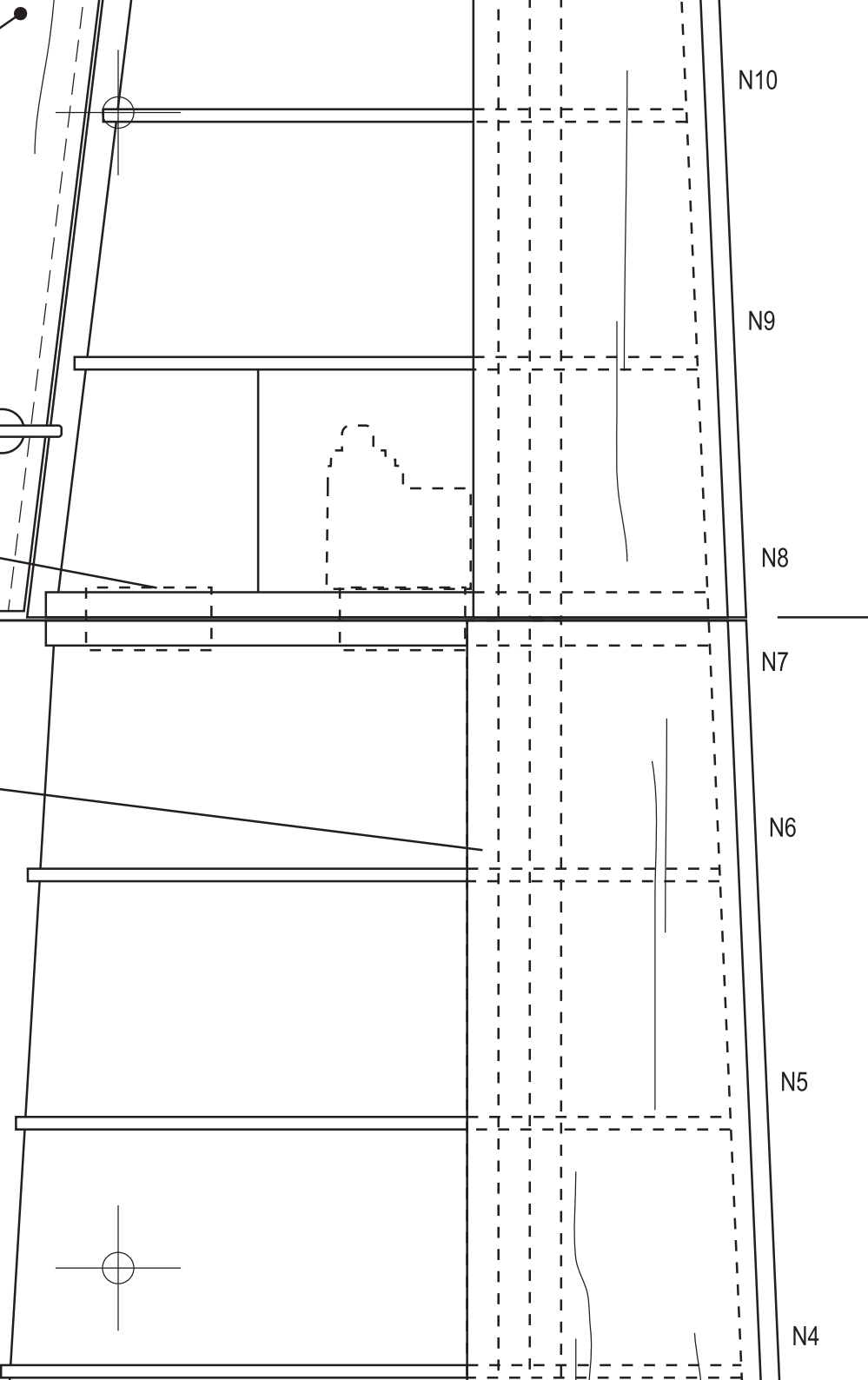
Bord d'attaque : balsa 3x8

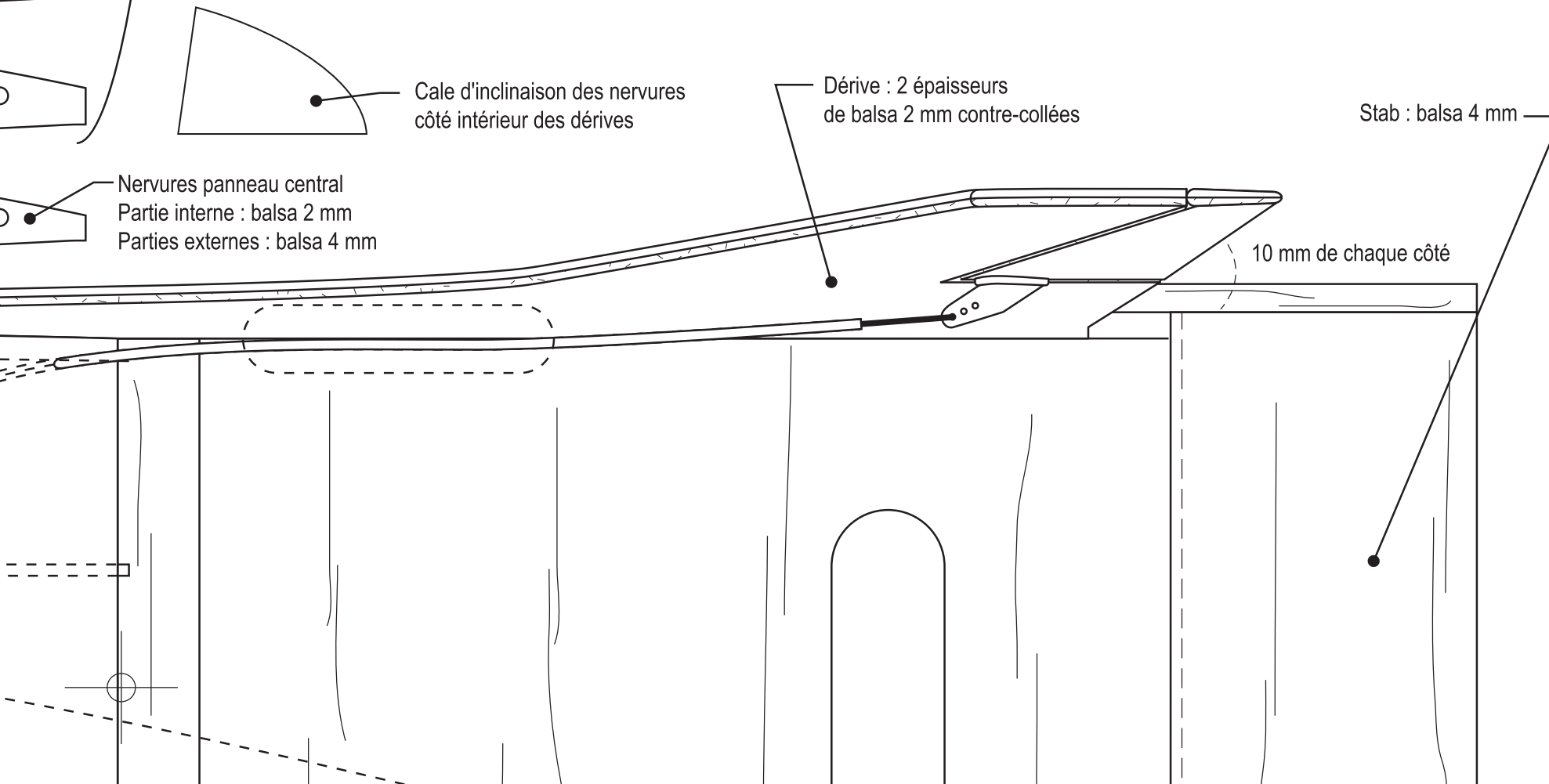
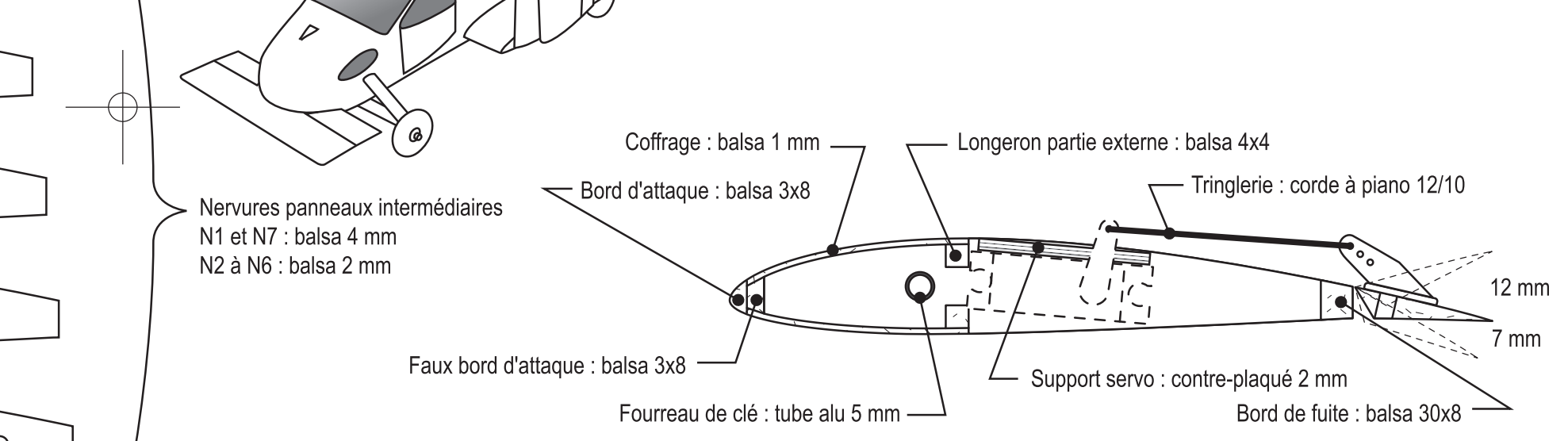
Coffrage : balsa 1 mm

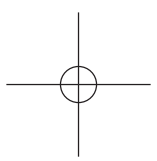
Longeron partie externe : balsa 4x4

Tringlerie : corde à piano 12/10









N4

N3

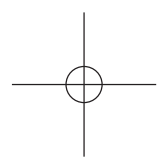
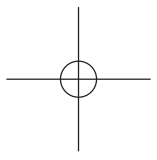
N2

N1

Fourreau de clé : tube alu diam. 5 mm

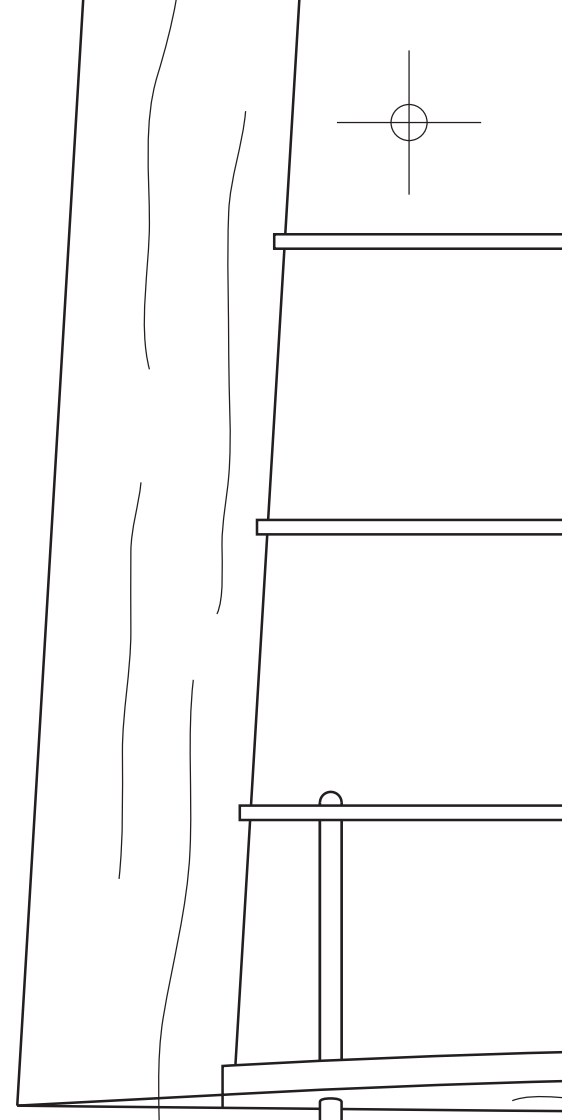
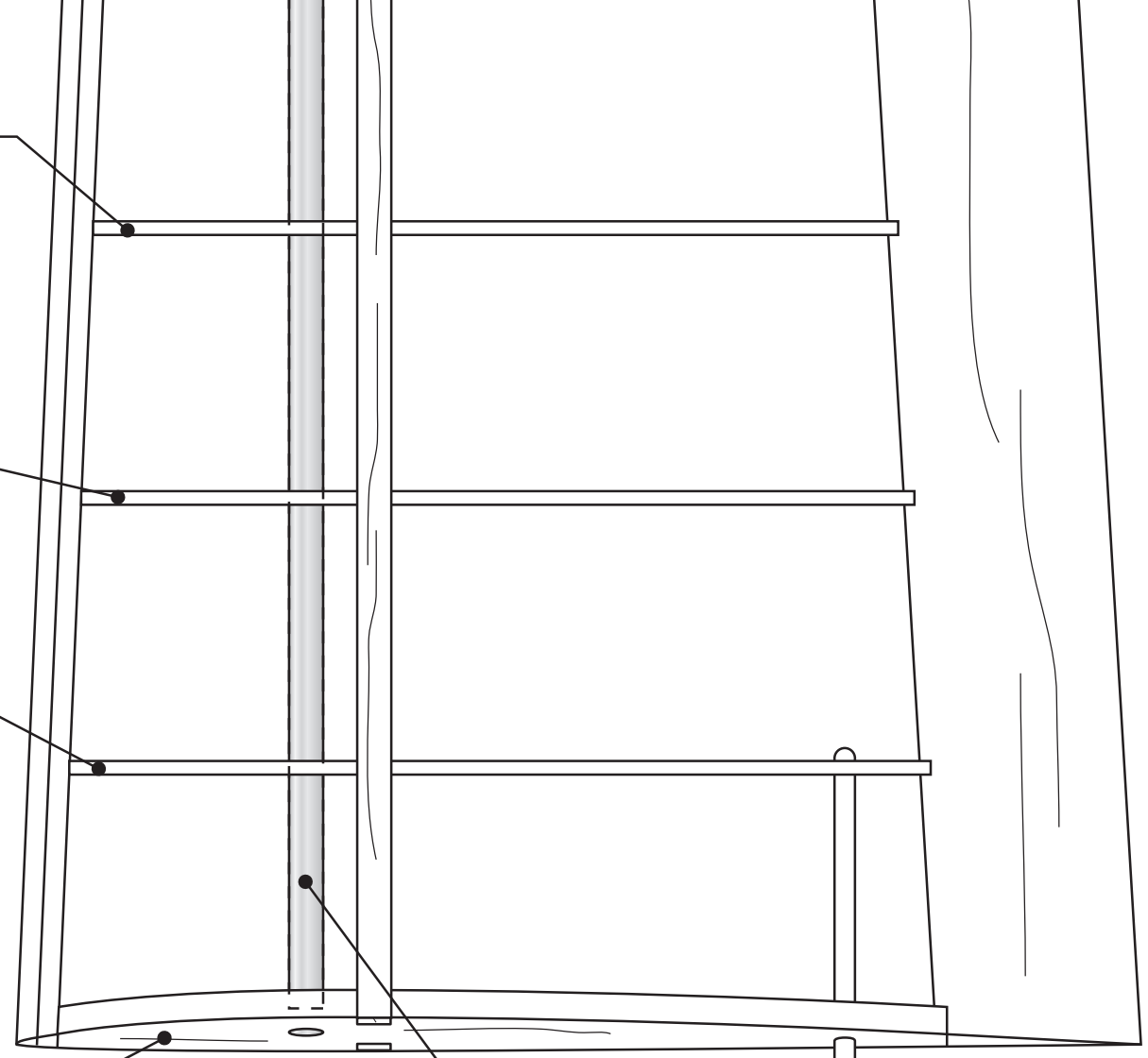
Cale d'inclinaison des nervures  
côté extérieur des dérives

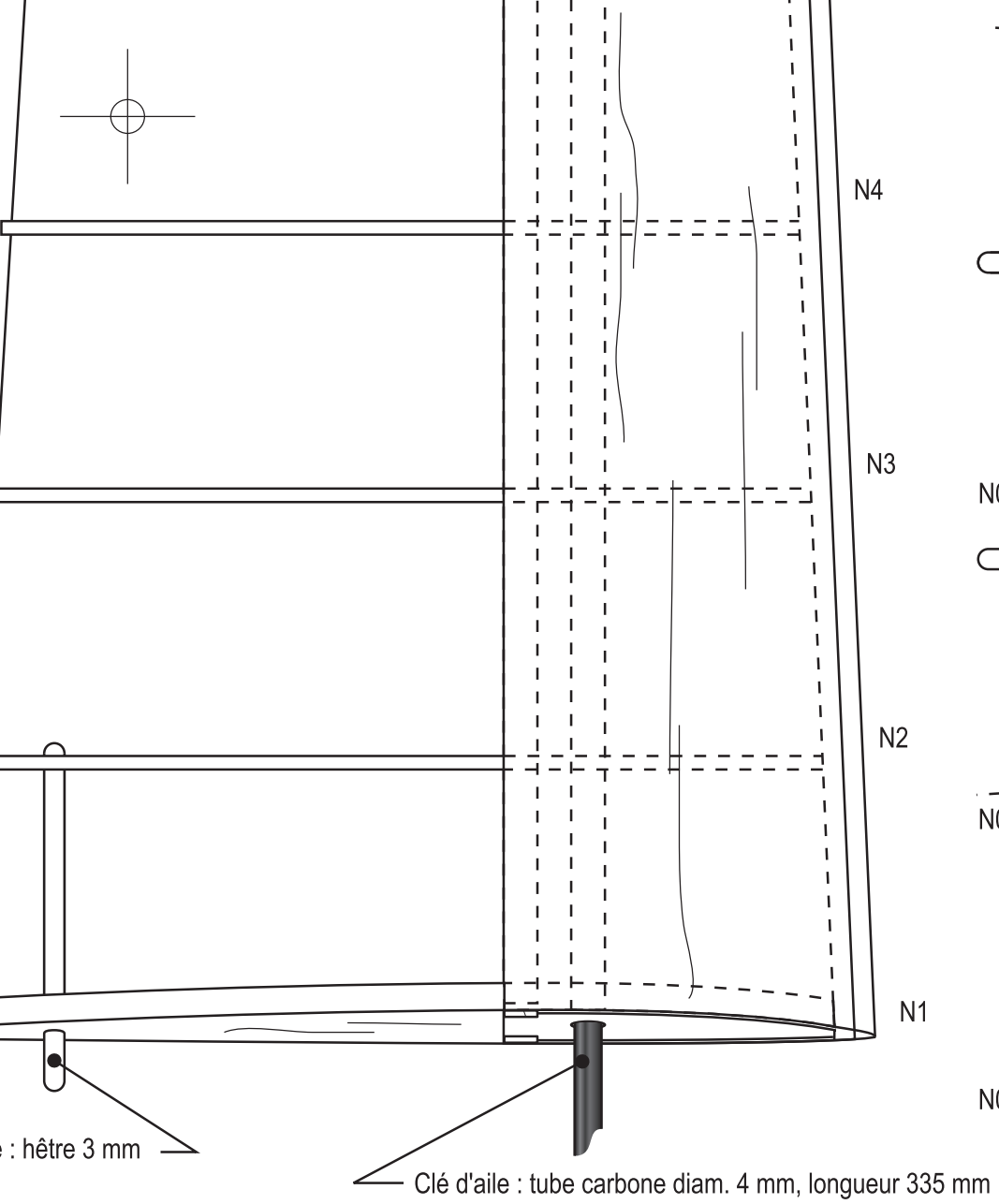
AILE DROITE VUE SANS COFFRAGE



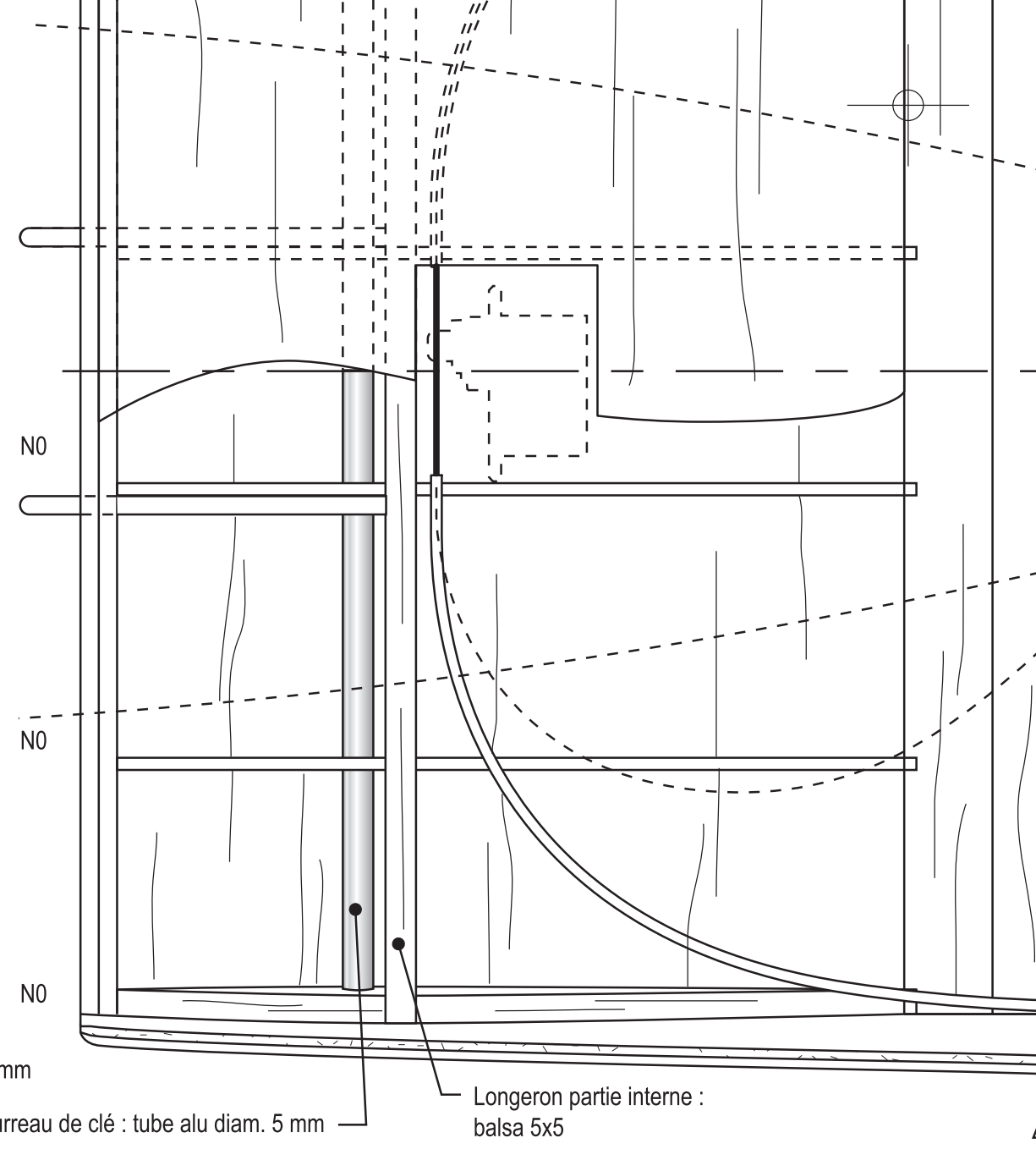
Tourillon d'incidence : hêtre 3 mm

AILE DROITE VUE AVEC COFFRAGE AU B



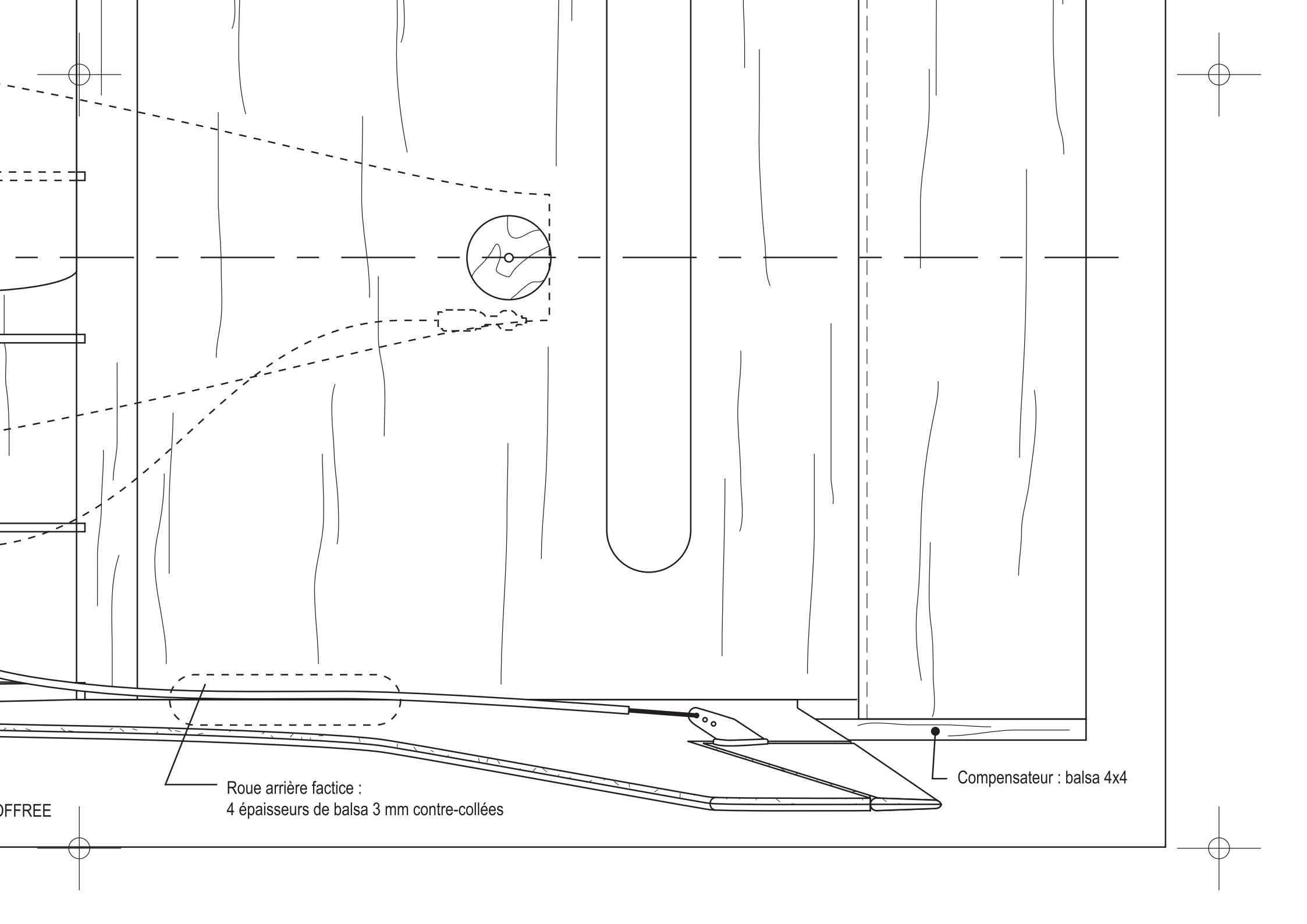


AVEC COFFRAGE AU BORD D'ATTAQUE DESSUS/DESSOUS



PARTIE CENTRALE DE L'AILE REPRESENTEE PARTIELLEMENT COFFREE





OFFFREE

Roue arrière factice :  
4 épaisseurs de balsa 3 mm contre-collées

Compensateur : balsa 4x4