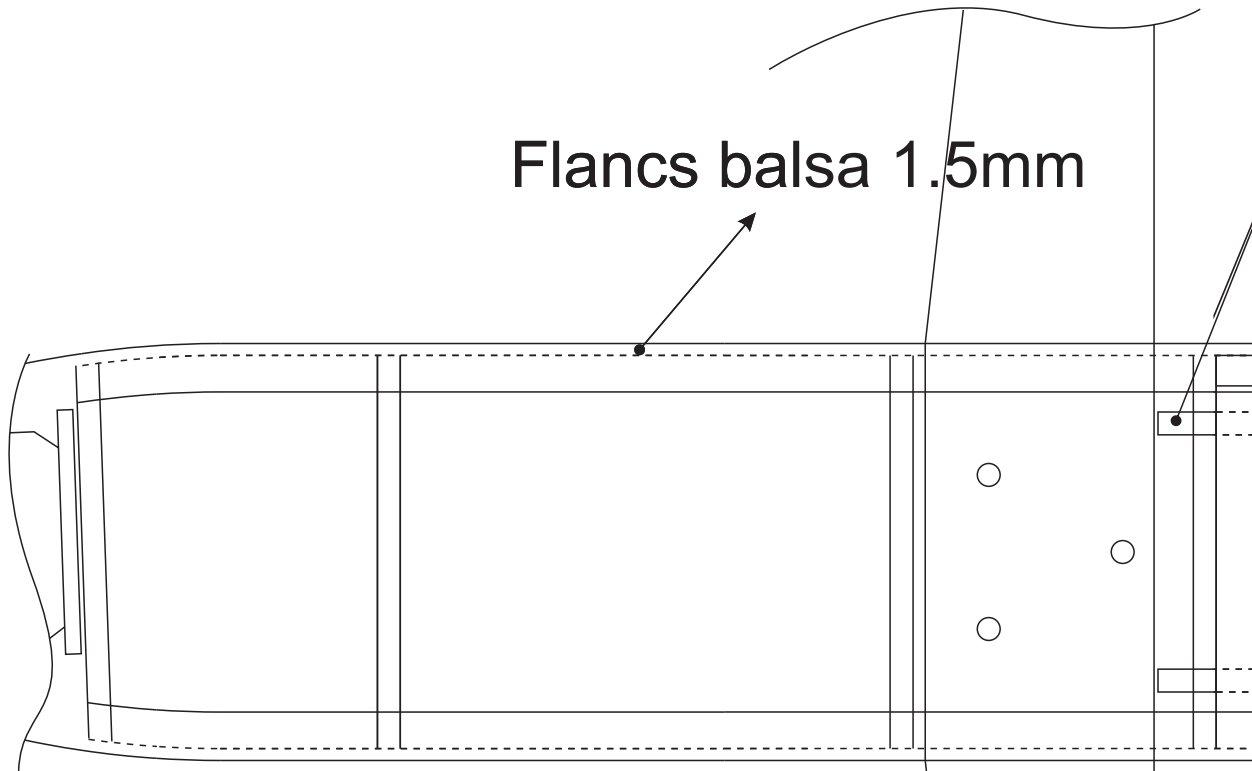
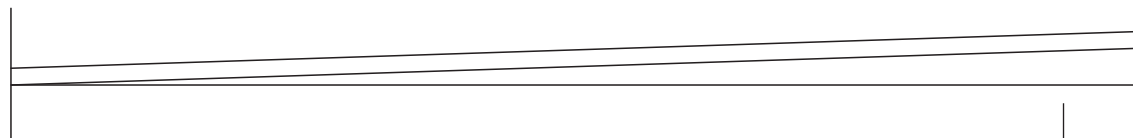


Flancs balsa 1.5mm



Taquet  $\varnothing$  3mm  
ctp 2mm



Taquet ( aile )  $\varnothing$  3mm

Balsa 4mm

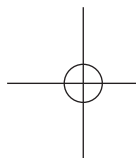
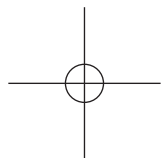
Ecrou noyé  
 $\varnothing$  3mm interieur

Ctp 3mm

**Again**  
*Design By*  
**Alexis.CHIMOT**

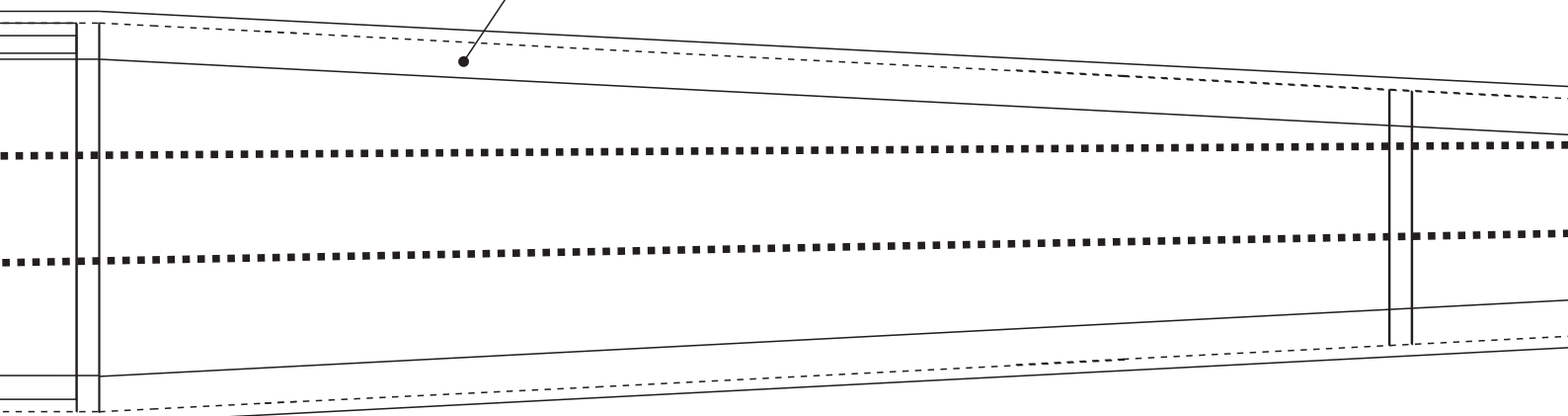
Planche 2/2

Article complet présenté sur cette page :  
[www.jivaro-models.org/again/page\\_again.html](http://www.jivaro-models.org/again/page_again.html)

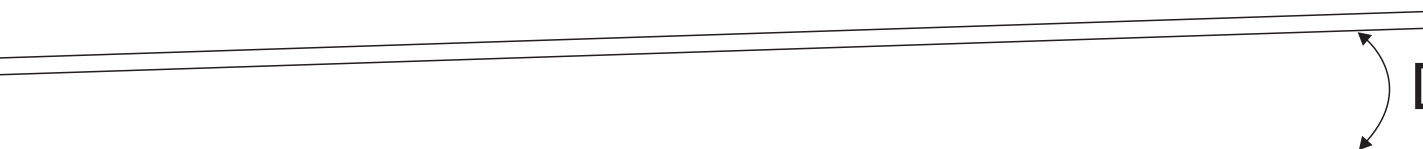
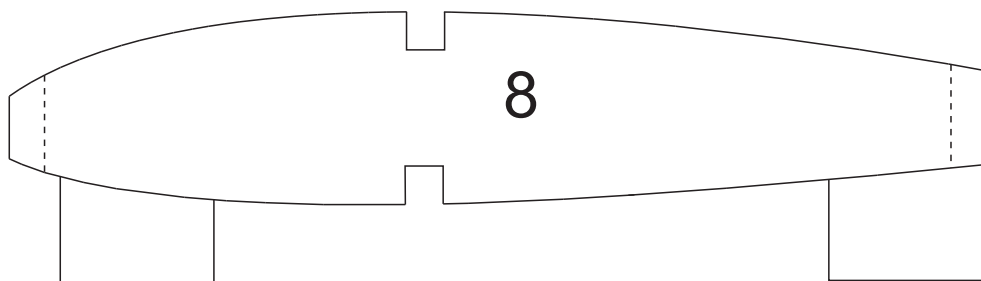
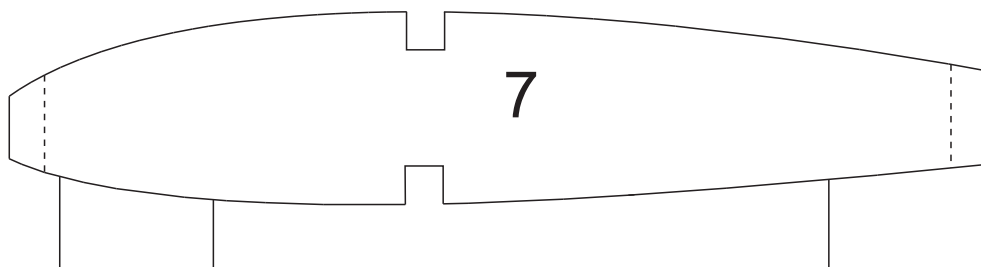


Avant  
Postérieur

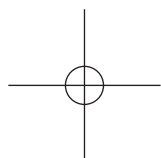
Baguettes 5x5



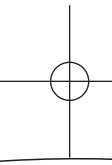
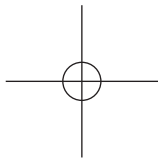
mm



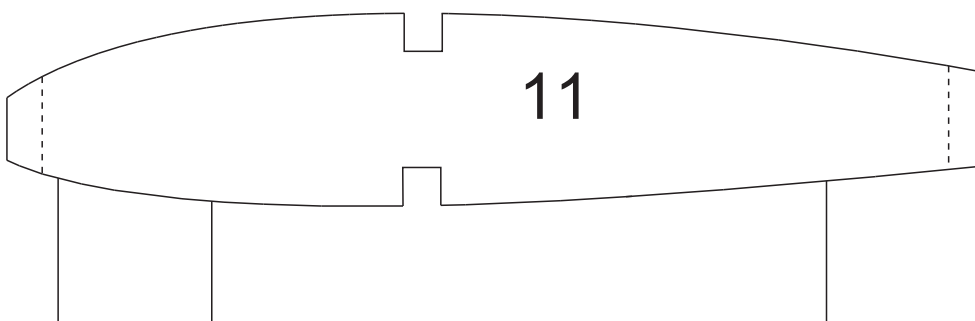
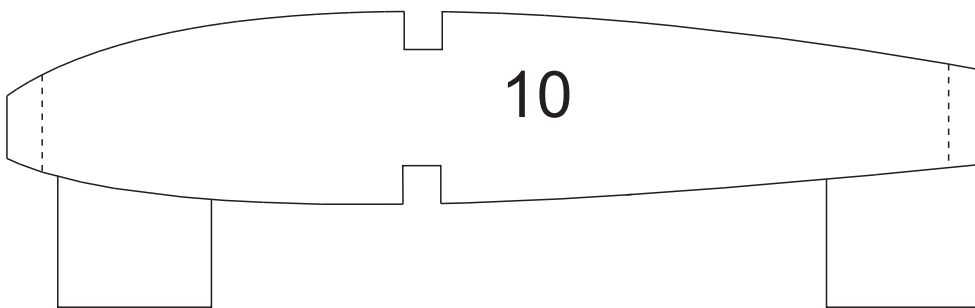
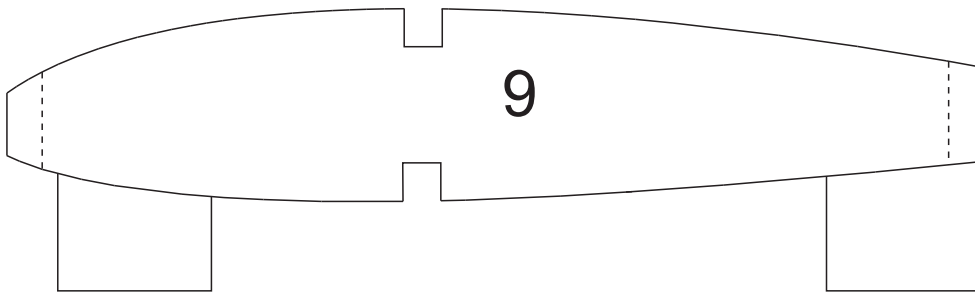
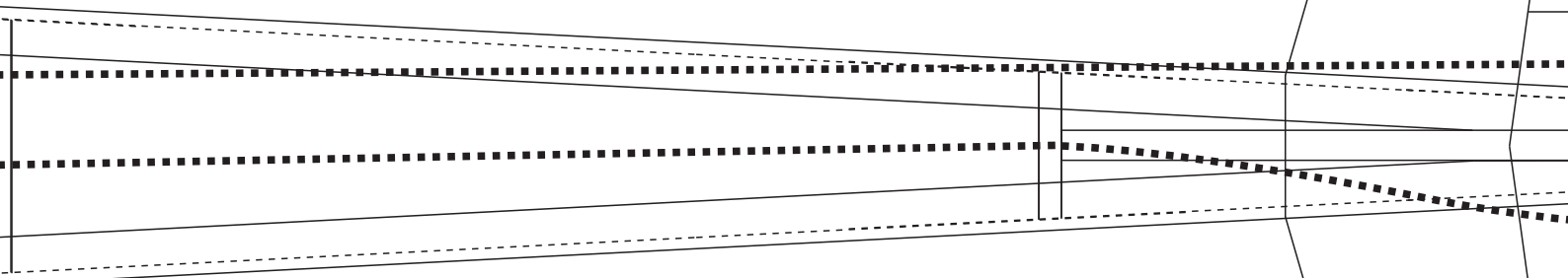
Diédre



Mise en

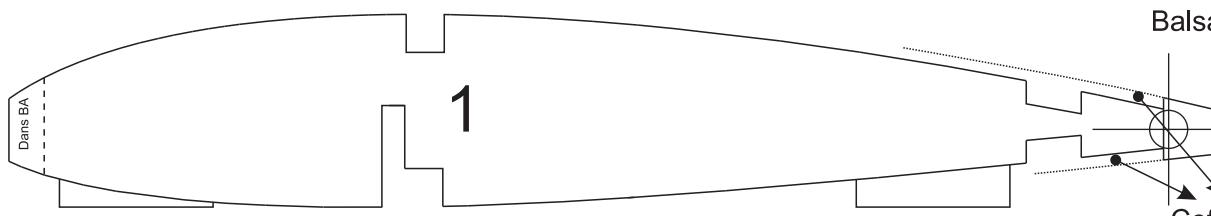
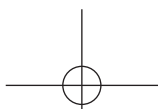


Stab  
balsa 4mm



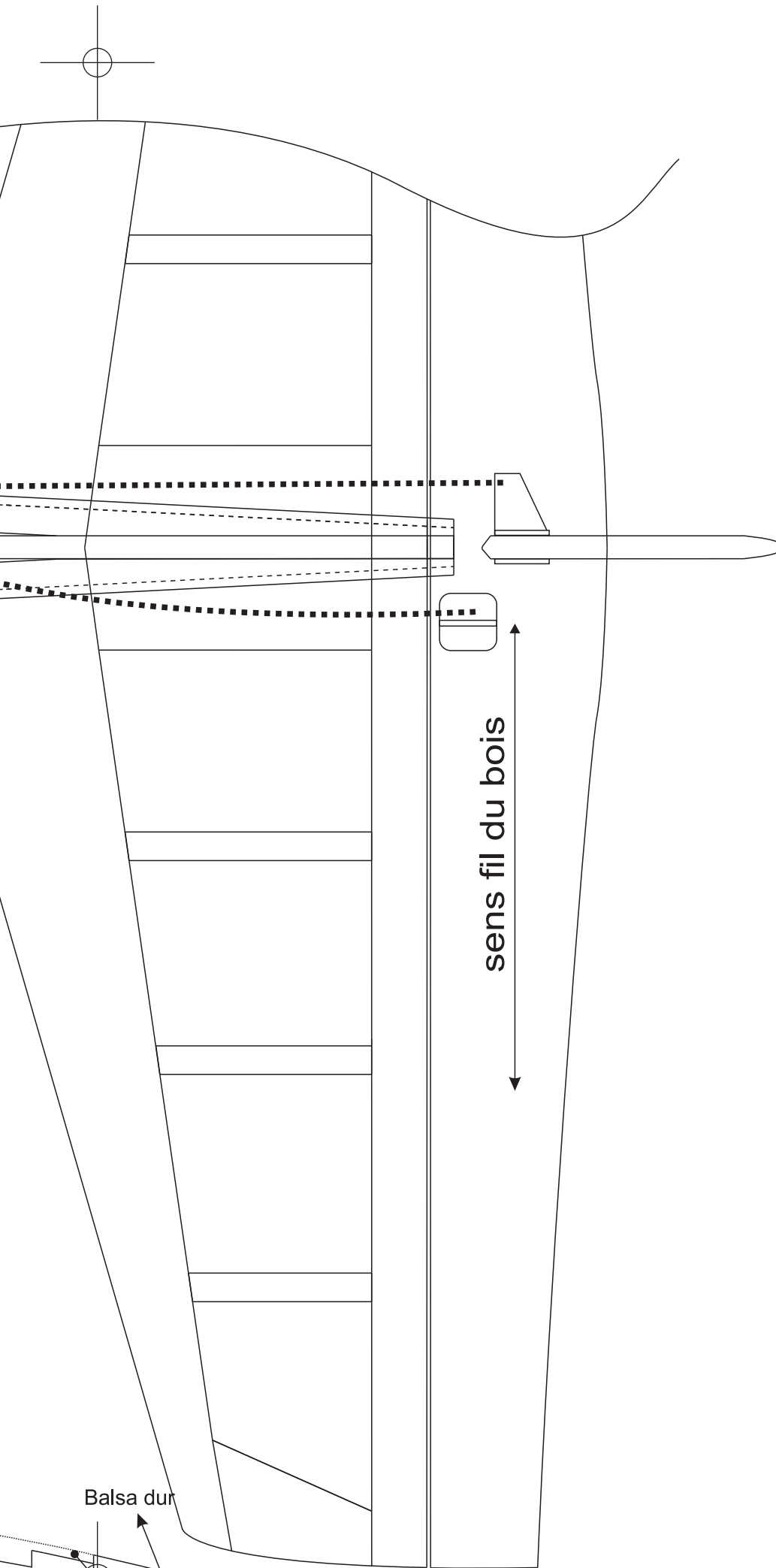
Diédre 2°

mise en forme



Balsa

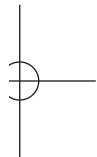
Cot



sens fil du bois

Balsa dur

Coffrage



Taquet  $\varnothing$  3mm  
ctp 2mm

clé d'aile

servos  
9 grs

1

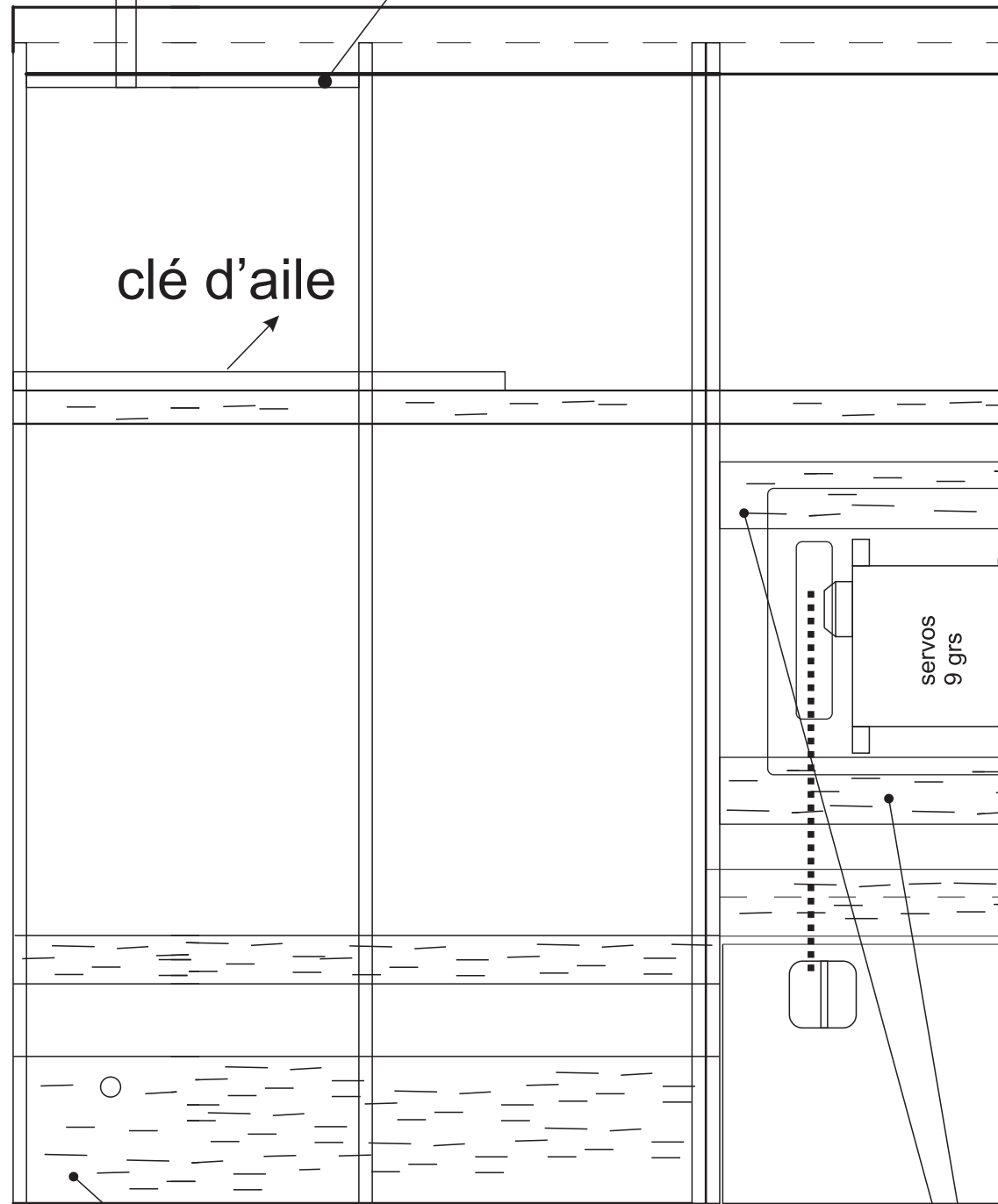
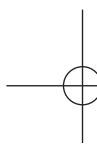
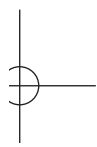
2

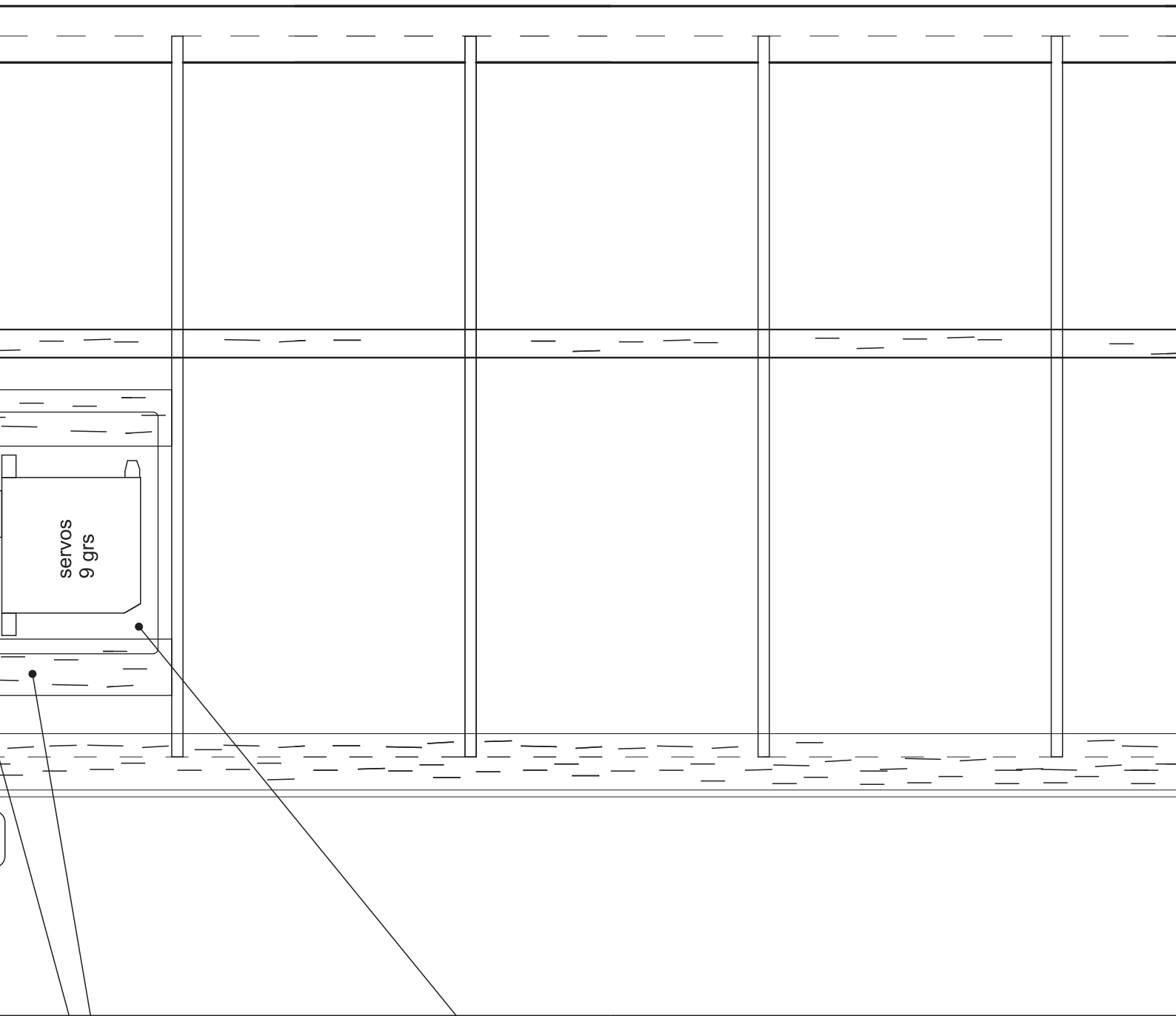
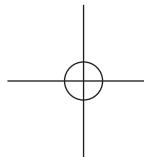
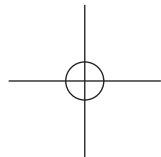
3

4

Balsa dur

Bals

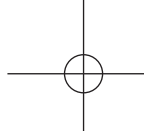
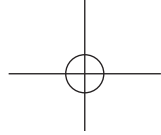
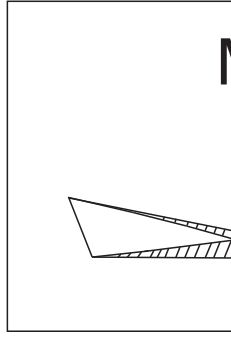
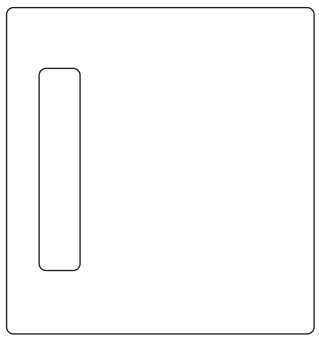




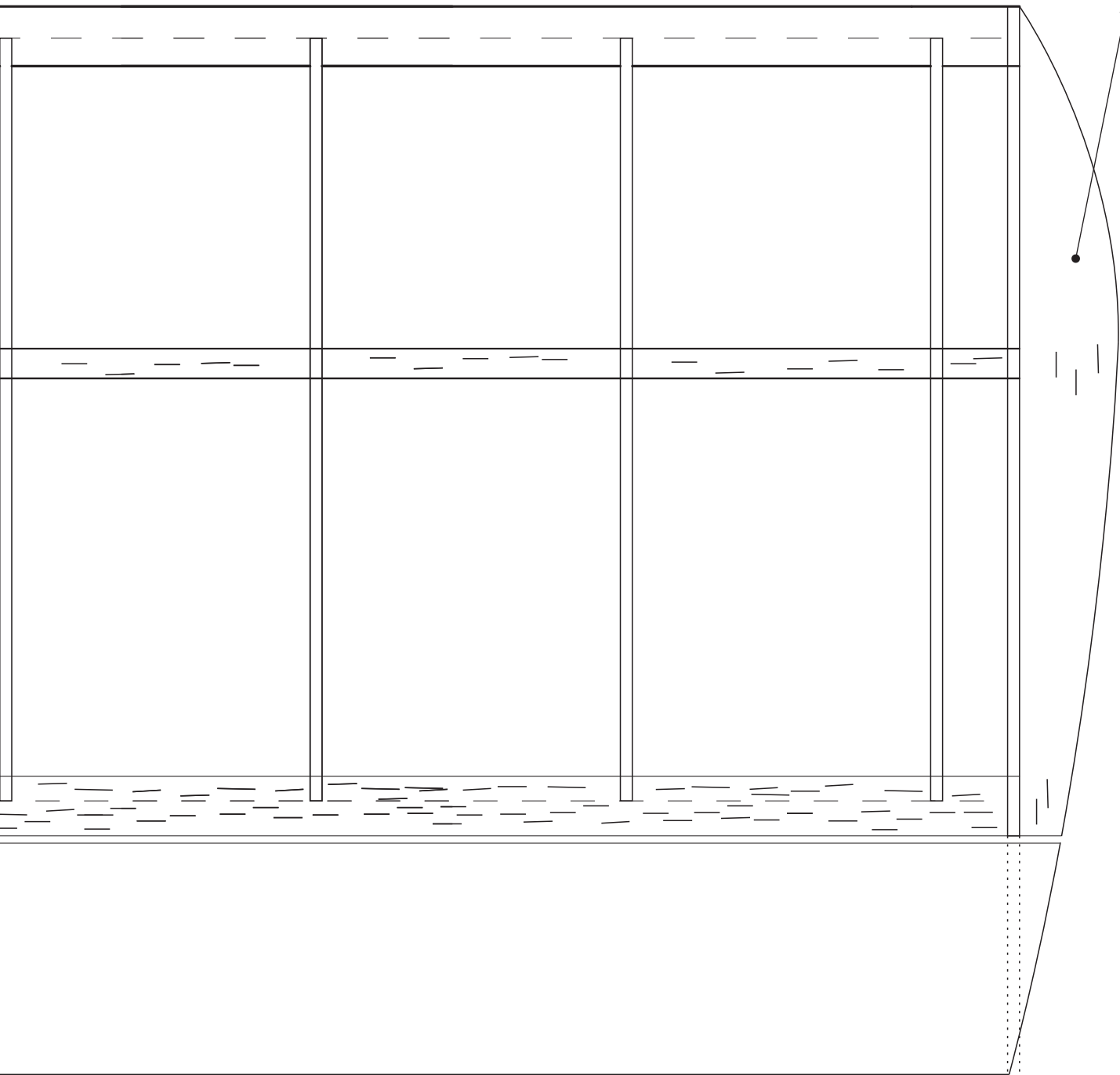
servos  
9 grs

Balsa 10mm

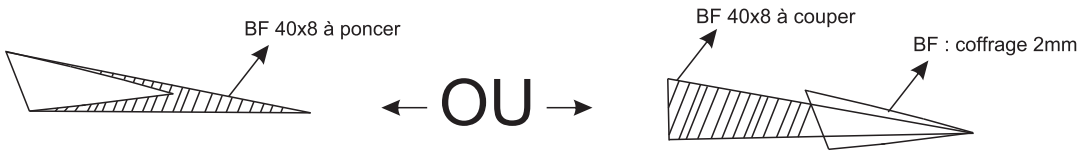
Platine servo  
Ctp 1,5mm



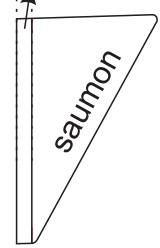
Mise en balsa



### Méthode réalisation du BF

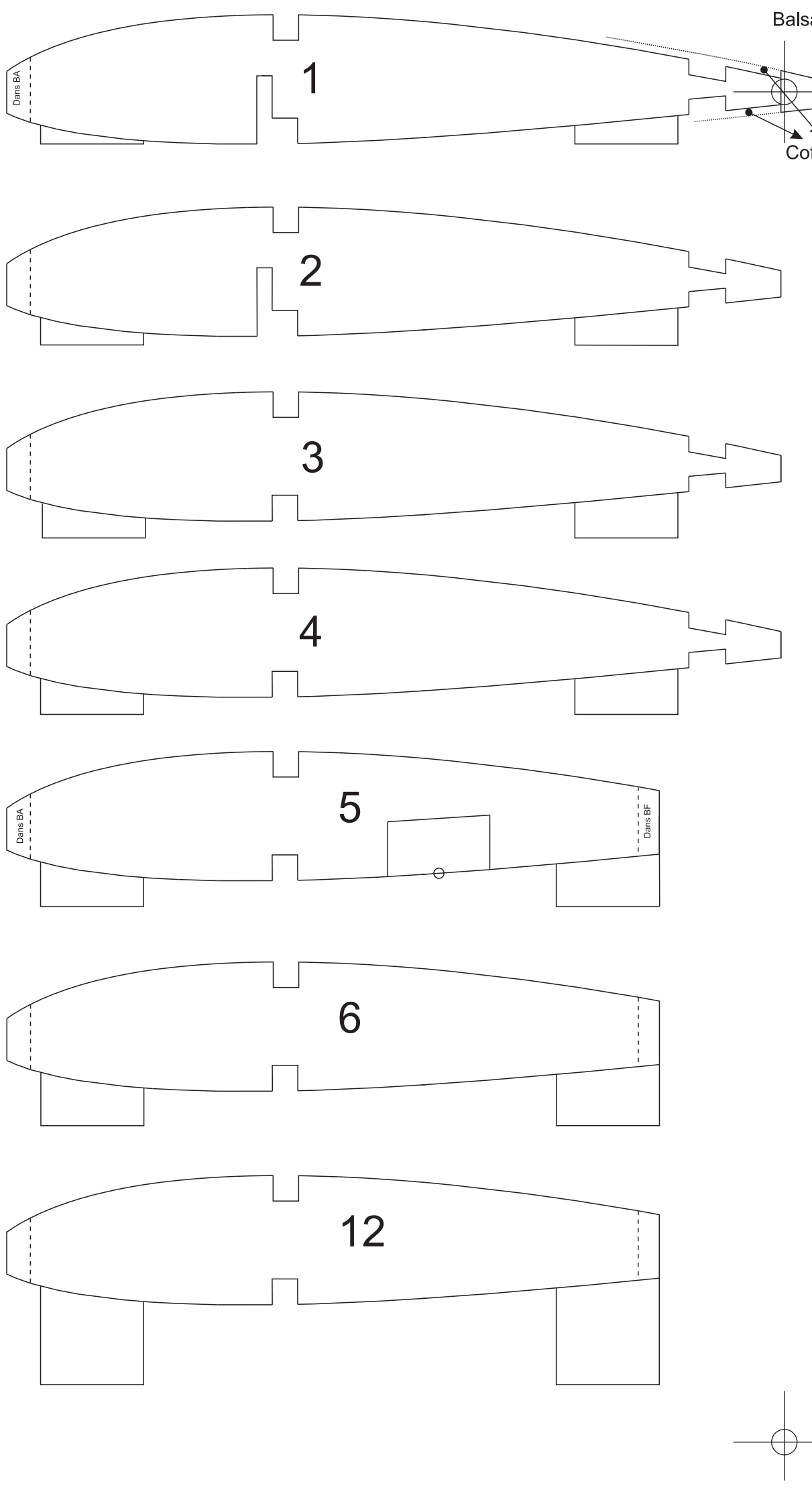
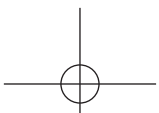


Nervure 12





se en forme  
alsa



12

